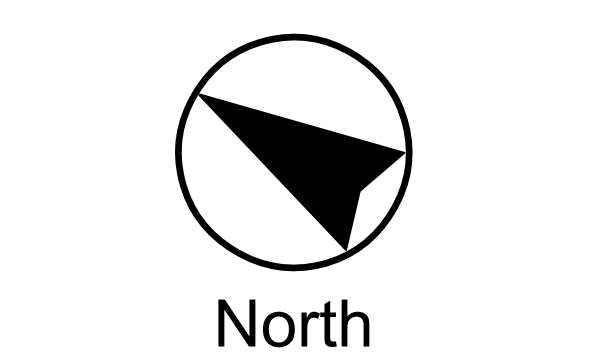
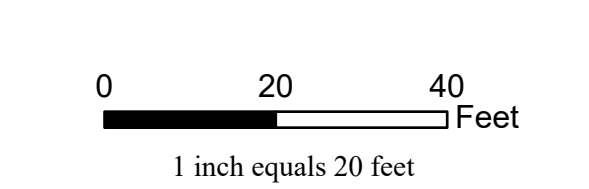
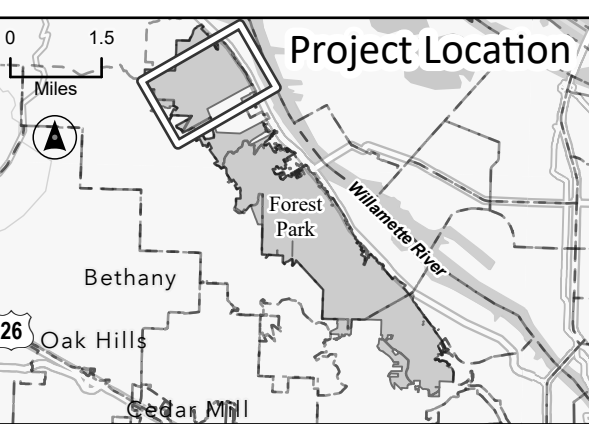
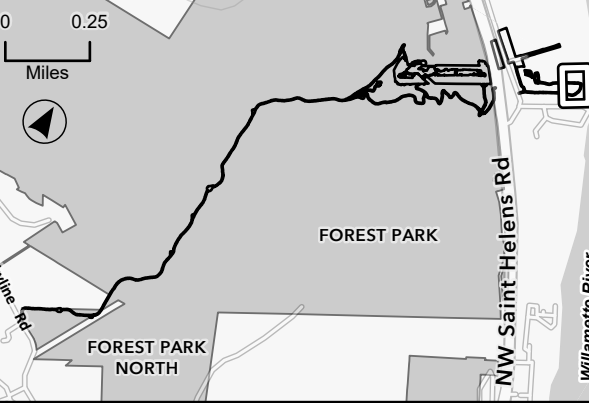




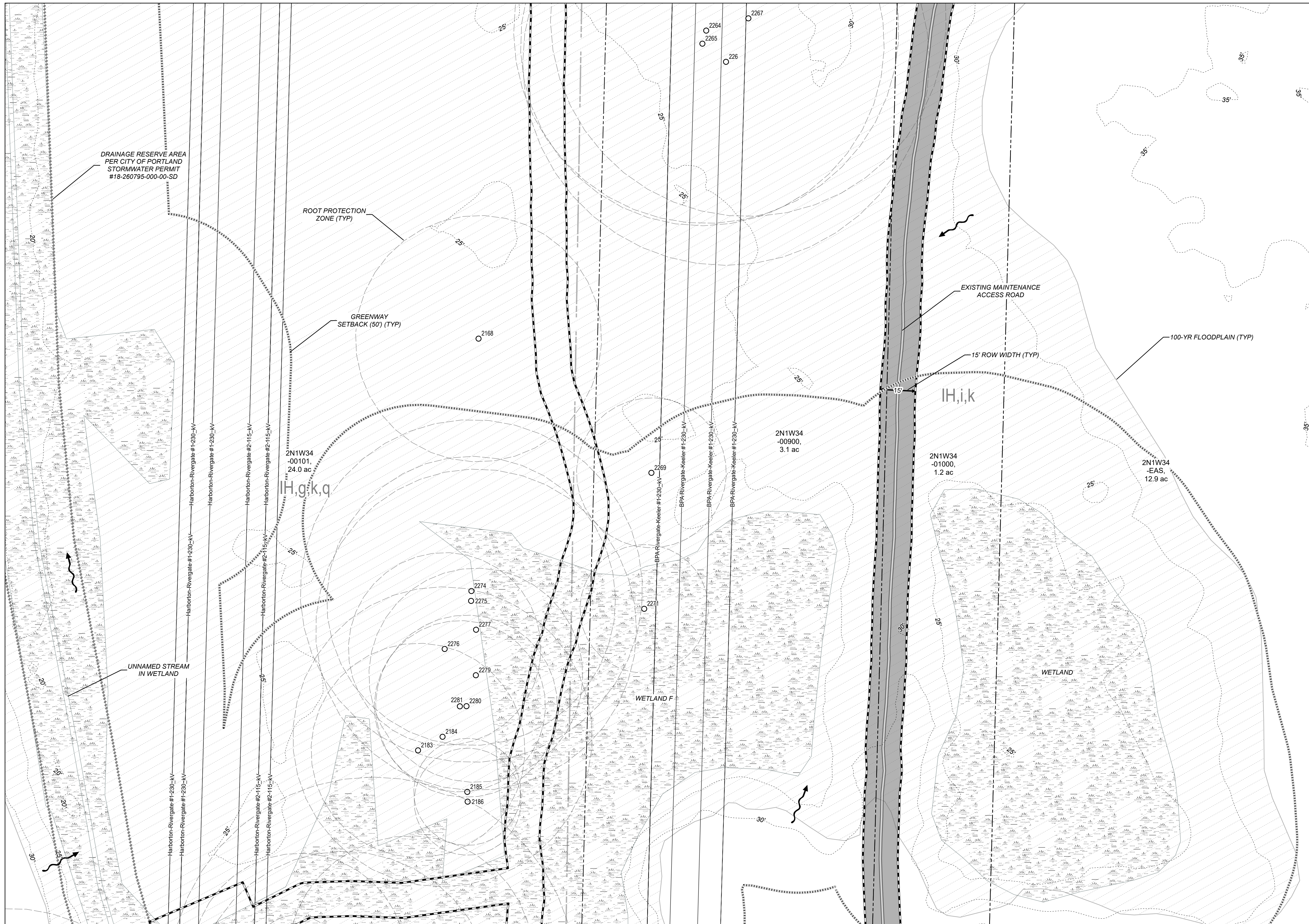
- Legend**
- Limits of Disturbance
 - Surveyed Tree Location**
 - Existing Deciduous (Living)
 - Existing Deciduous (Dead)
 - Existing Conifer (Living)
 - Existing Conifer (Dead)
 - Root Protection Zone
 - Trail
 - Edge of Existing Roadway/Access Road (approximate)
 - Drainage Reserve Area
 - Drainage Flow
 - Wetland/Ordinary High Water (OHW)
 - Greenway Setback (50-ft)
 - Noxious Weed Concentration
 - Existing Maintenance Access Road Centerline
 - Culvert
 - 100-year Floodplain
 - Powerline Easement
 - Multnomah County Tax Lot
 - Zoning (City of Portland)
 - Environmental Transition Zone
 - Forest Park Boundary
 - Contour (5-foot intervals, vertical datum NAVD88)

- Zoning (City of Portland):**
- RF = Farm and Forest
 - IH = Heavy Industrial
 - OS = Open Space
 - c = Environmental Conservation
 - d = Design
 - g = River General
 - i = River Industrial
 - k = Prime Industrial
 - p = Environmental Protection
 - q = Water Quality Resource Area
 - s = Scenic Resource

- NOTES:**
1. Root protection zones for single-stem trees are calculated by DBH x 1-ft. Therefore, a 6-in DBH tree has a root protection zone of 6-ft in diameter. For multi-stemmed trees, see Mitigation Site Plan Details II, SHT. I.325. Root protection zones are not shown for trees to be removed or dead trees.
 2. Vine Maples and all trees with a DBH less than 6-in are not shown on these plans.
 3. South of the Harborton Substation, only trees with RPZs which overlap with the Limits of Disturbance are shown on these plans; all surveyed trees are included in the Project Site area.
 4. See Construction Management Plan set for tree protection fencing.
 5. Tax lots which intersect the Limits of Disturbance are labeled with the Tax Lot ID # and acreage.



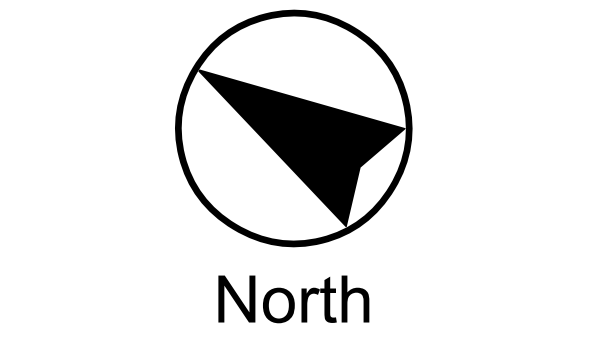
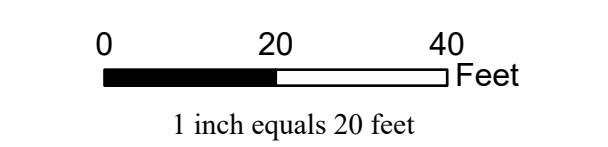
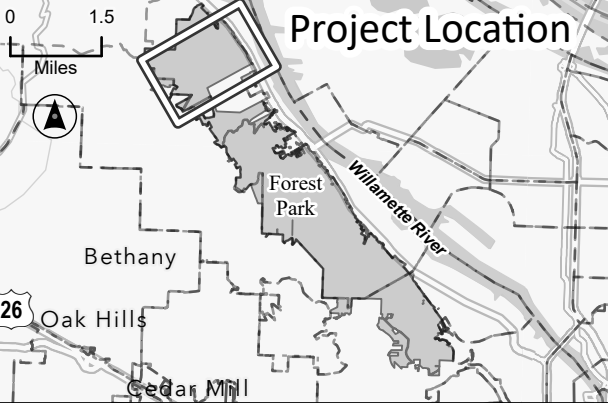
MATCHLINE SEE SHEET L002



- Legend**
- Limits of Disturbance
 - Surveyed Tree Location**
 - Existing Deciduous (Living)
 - Existing Deciduous (Dead)
 - Existing Conifer (Living)
 - Existing Conifer (Dead)
 - Root Protection Zone
 - Trail
 - Edge of Existing Roadway/Access Road (approximate)
 - Drainage Reserve Area
 - Drainage Flow
 - Wetland/Ordinary High Water (OHW)
 - Greenway Setback (50-ft)
 - Noxious Weed Concentration
 - Existing Maintenance Access Road Centerline
 - Culvert
 - 100-year Floodplain
 - Powerline Easement
 - Multnomah County Tax Lot
 - Zoning (City of Portland)
 - Environmental Transition Zone
 - Forest Park Boundary
 - Contour (5-foot intervals, vertical datum NAVD88)

- Zoning (City of Portland):**
- RF = Farm and Forest
 - IH = Heavy Industrial
 - OS = Open Space
 - c = Environmental Conservation
 - d = Design
 - g = River General
 - i = River Industrial
 - k = Prime Industrial
 - p = Environmental Protection
 - q = Water Quality Resource Area
 - s = Scenic Resource

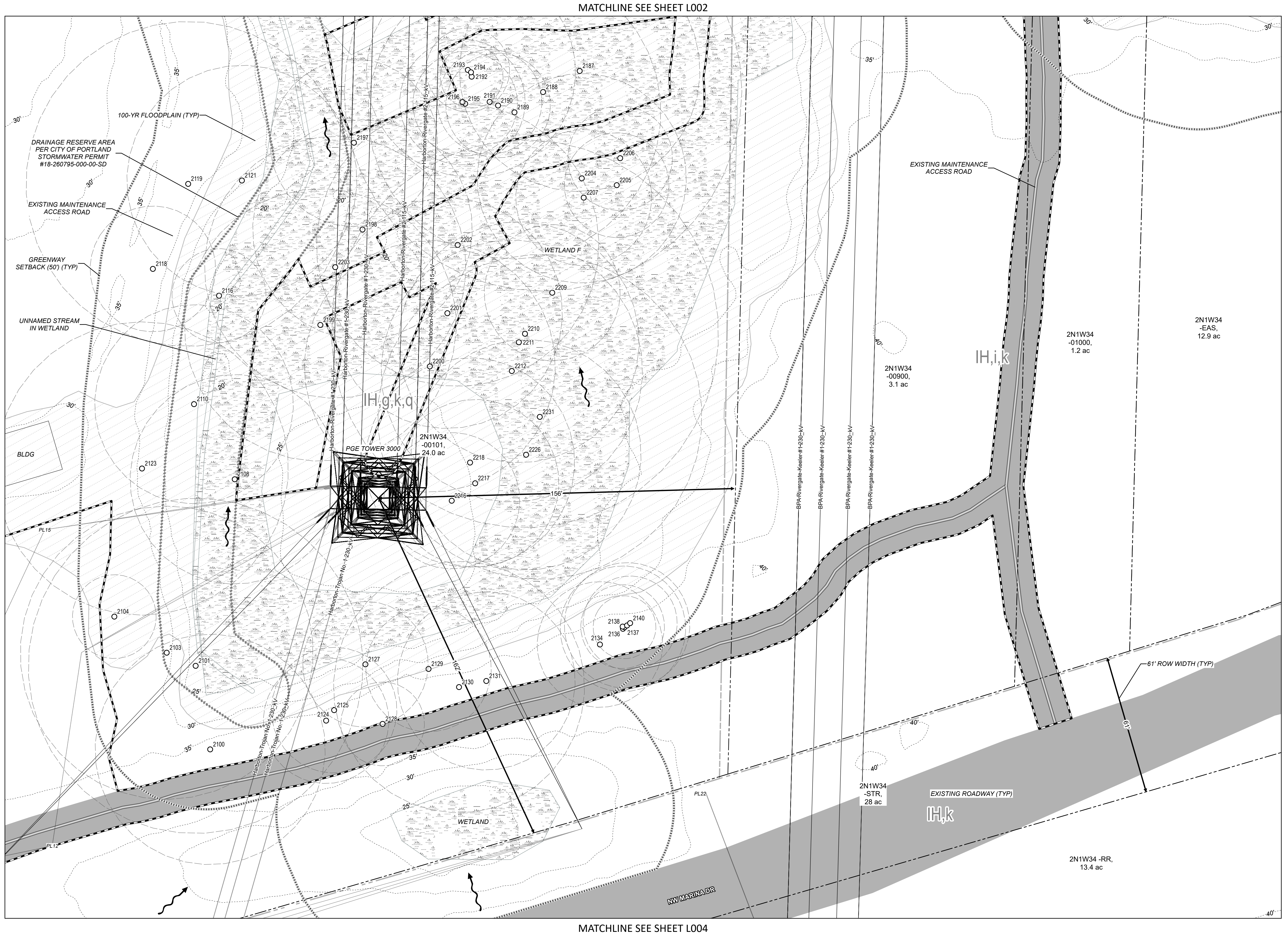
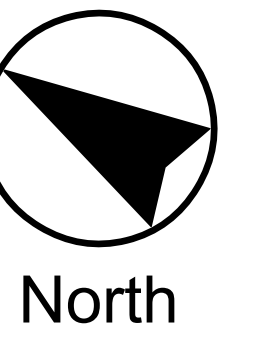
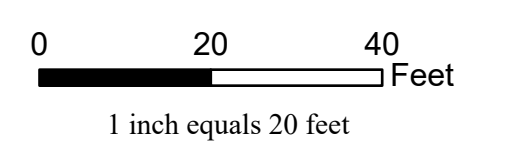
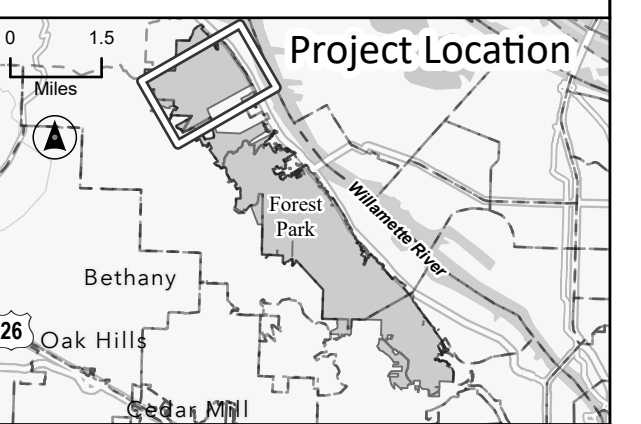
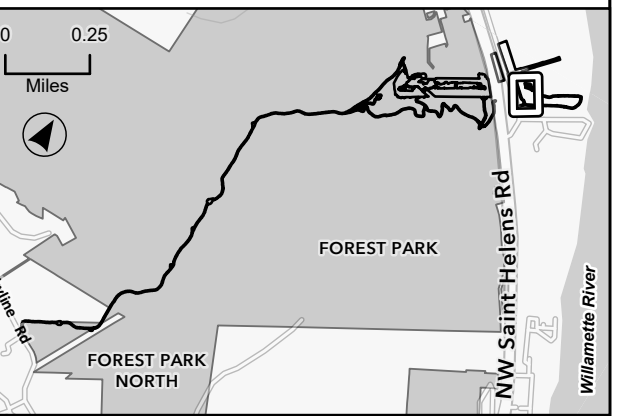
- NOTES:**
1. Root protection zones for single-stem trees are calculated by DBH x 1-ft. Therefore, a 6-in DBH tree has a root protection zone of 6-ft in diameter. For multi-stemmed trees, see Mitigation Site Plan Details II, SHT I.325. Root protection zones are not shown for trees to be removed or dead trees.
 2. Vine Maples and all trees with a DBH less than 6-in are not shown on these plans.
 3. South of the Harborton Substation, only trees with RPZs which overlap with the Limits of Disturbance are shown on these plans; all surveyed trees are included in the Project Site area.
 4. See Construction Management Plan set for tree protection fencing.
 5. Tax lots which intersect the Limits of Disturbance are labeled with the Tax Lot ID # and acreage.





- Legend**
- Limits of Disturbance
 - Surveyed Tree Location**
 - Existing Deciduous (Living)
 - Existing Deciduous (Dead)
 - Existing Conifer (Living)
 - Existing Conifer (Dead)
 - Root Protection Zone
 - Trail
 - Edge of Existing Roadway/Access Road (approximate)
 - Drainage Reserve Area
 - Drainage Flow
 - Wetland/Ordinary High Water (OHW)
 - Greenway Setback (50-ft)
 - Noxious Weed Concentration
 - Existing Maintenance Access Road Centerline
 - Culvert
 - 100-year Floodplain
 - Powerline Easement
 - Multnomah County Tax Lot
 - Zoning (City of Portland)
 - Environmental Transition Zone
 - Forest Park Boundary
 - Contour (5-foot intervals, vertical datum NAVD88)
- Zoning (City of Portland):**
 RF = Farm and Forest
 IH = Heavy Industrial
 OS = Open Space
 c = Environmental Conservation
 d = Design
 g = River General
 i = River Industrial
 k = Prime Industrial
 p = Environmental Protection
 q = Water Quality Resource Area
 s = Scenic Resource

- NOTES:**
1. Root protection zones for single-stem trees are calculated by DBH x 1-ft. Therefore, a 6-in DBH tree has a root protection zone of 6-ft in diameter. For multi-stemmed trees, see Mitigation Site Plan Details II, SHEET 1.325. Root protection zones are not shown for trees to be removed or dead trees.
 2. Vine Maples and all trees with a DBH less than 6-in are not shown on these plans.
 3. South of the Harborton Substation, only trees with RPZs which overlap with the Limits of Disturbance are shown on these plans; all surveyed trees are included in the Project Site area.
 4. See Construction Management Plan set for tree protection fencing.
 5. Tax lots which intersect the Limits of Disturbance are labeled with the Tax Lot ID # and acreage.



MATCHLINE SEE SHEET L002

MATCHLINE SEE SHEET L004

MATCHLINE SEE SHEET L003



MATCHLINE SEE SHEET L007, L006

MATCHLINE SEE SHEET L005

Harborton Reliability Project



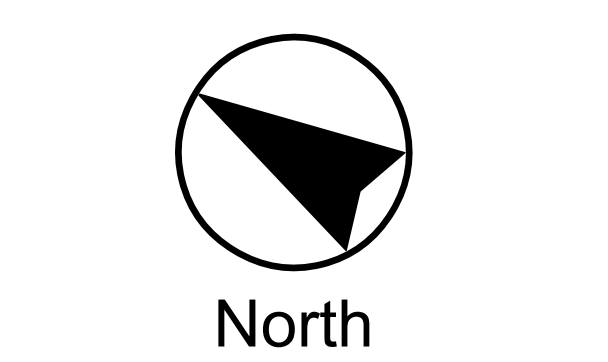
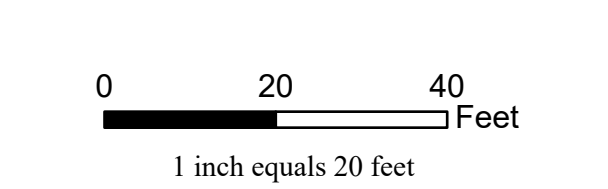
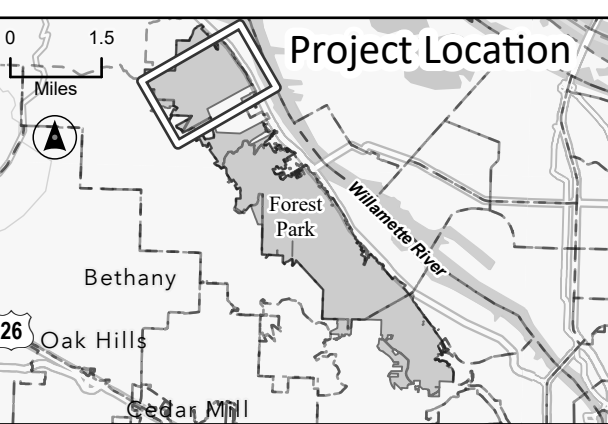
Existing Conditions Plan
 Sheet 4 of 23
L004

10/23/2024

- Legend**
- Limits of Disturbance
 - Surveyed Tree Location**
 - Existing Deciduous (Living)
 - Existing Deciduous (Dead)
 - Existing Conifer (Living)
 - Existing Conifer (Dead)
 - Root Protection Zone
 - Trail
 - Edge of Existing Roadway/Access Road (approximate)
 - Drainage Reserve Area
 - Drainage Flow
 - Wetland/Ordinary High Water (OHW)
 - Greenway Setback (50-ft)
 - Noxious Weed Concentration
 - Existing Maintenance Access Road Centerline
 - Culvert
 - 100-year Floodplain
 - Powerline Easement
 - Multnomah County Tax Lot
 - Zoning (City of Portland)
 - Environmental Transition Zone
 - Forest Park Boundary
 - Contour (5-foot intervals, vertical datum NAVD88)

- Zoning (City of Portland):**
- RF = Farm and Forest
 - IH = Heavy Industrial
 - OS = Open Space
 - c = Environmental Conservation
 - d = Design
 - g = River General
 - i = River Industrial
 - k = Prime Industrial
 - p = Environmental Protection
 - q = Water Quality Resource Area
 - s = Scenic Resource

- NOTES:**
1. Root protection zones for single-stem trees are calculated by DBH x 1-ft. Therefore, a 6-in DBH tree has a root protection zone of 6-ft in diameter. For multi-stemmed trees, see Mitigation Site Plan Details II, SHEET L325. Root protection zones are not shown for trees to be removed or dead trees.
 2. Vine Maples and all trees with a DBH less than 6-in are not shown on these plans.
 3. South of the Harborton Substation, only trees with RPZs which overlap with the Limits of Disturbance are shown on these plans; all surveyed trees are included in the Project Site area.
 4. See Construction Management Plan set for tree protection fencing.
 5. Tax lots which intersect the Limits of Disturbance are labeled with the Tax Lot ID # and acreage.

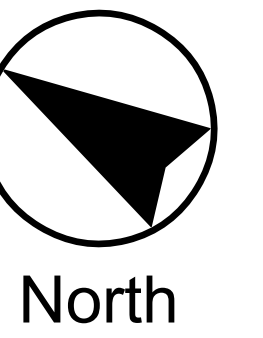
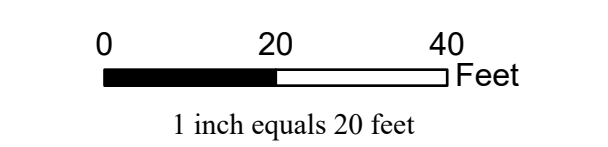
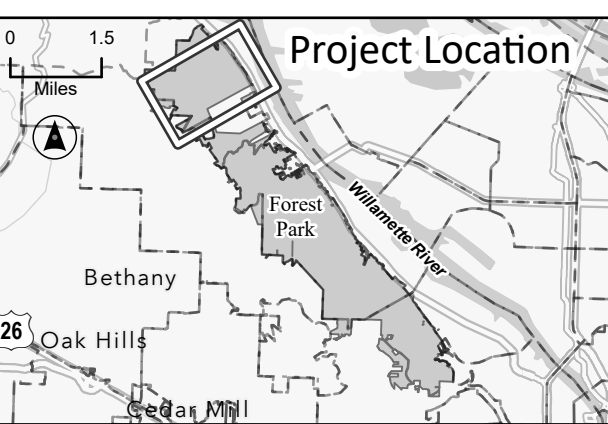




- Legend
- Limits of Disturbance
 - Surveyed Tree Location**
 - Existing Deciduous (Living)
 - Existing Deciduous (Dead)
 - Existing Conifer (Living)
 - Existing Conifer (Dead)
 - Root Protection Zone
 - Trail
 - Edge of Existing Roadway/Access Road (approximate)
 - Drainage Reserve Area
 - Drainage Flow
 - Wetland/Ordinary High Water (OHW)
 - Greenway Setback (50-ft)
 - Noxious Weed Concentration
 - Existing Maintenance Access Road Centerline
 - Culvert
 - 100-year Floodplain
 - Powerline Easement
 - Multnomah County Tax Lot
 - Zoning (City of Portland)
 - Environmental Transition Zone
 - Forest Park Boundary
 - Contour (5-foot intervals, vertical datum NAVD88)

- Zoning (City of Portland):
- RF = Farm and Forest
 - IH = Heavy Industrial
 - OS = Open Space
 - c = Environmental Conservation
 - d = Design
 - g = River General
 - i = River Industrial
 - k = Prime Industrial
 - p = Environmental Protection
 - q = Water Quality Resource Area
 - s = Scenic Resource

- NOTES:
1. Root protection zones for single-stem trees are calculated by DBH x 1-ft. Therefore, a 6-in DBH tree has a root protection zone of 6-ft in diameter. For multi-stemmed trees, see Mitigation Site Plan Details II, SHEET L-325. Root protection zones are not shown for trees to be removed or dead trees.
 2. Vine Maples and all trees with a DBH less than 6-in are not shown on these plans.
 3. South of the Harborton Substation, only trees with RPZs which overlap with the Limits of Disturbance are shown on these plans; all surveyed trees are included in the Project Site area.
 4. See Construction Management Plan set for tree protection fencing.
 5. Tax lots which intersect the Limits of Disturbance are labeled with the Tax Lot ID # and acreage.



MATCHLINE SEE SHEET L004

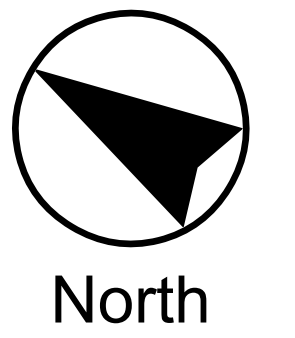
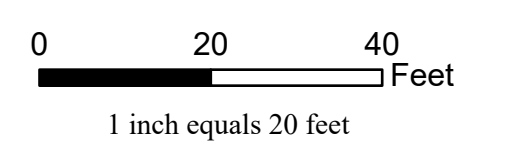
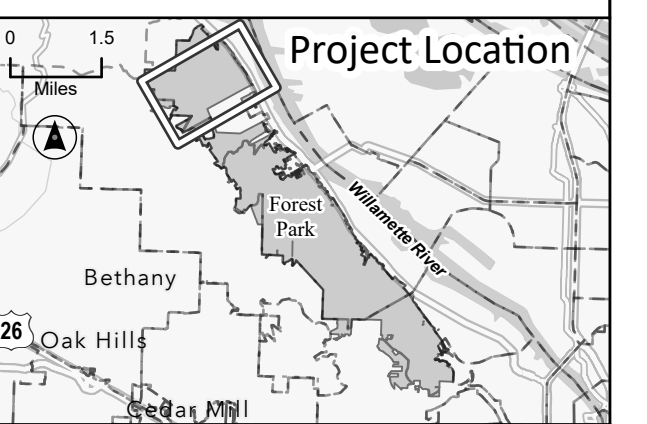
MATCHLINE SEE SHEET L007



- Legend**
- Limits of Disturbance
 - Surveyed Tree Location
 - Existing Deciduous (Living)
 - Existing Deciduous (Dead)
 - Existing Conifer (Living)
 - Existing Conifer (Dead)
 - Root Protection Zone
 - Trail
 - Edge of Existing Roadway/Access Road (approximate)
 - Drainage Reserve Area
 - Drainage Flow
 - Wetland/Ordinary High Water (OHW)
 - Noxious Weed Concentration
 - Existing Maintenance Access Road Centerline
 - Culvert
 - 100-year Floodplain
 - Powerline Easement
 - Multnomah County Tax Lot
 - Zoning (City of Portland)
 - Environmental Transition Zone
 - Forest Park Boundary
 - Contour (5-foot intervals, vertical datum NAVD88)

- Zoning (City of Portland):**
- RF = Farm and Forest
 - IH = Heavy Industrial
 - OS = Open Space
 - c = Environmental Conservation
 - d = Design
 - g = River General
 - i = River Industrial
 - k = Prime Industrial
 - p = Environmental Protection
 - q = Water Quality Resource Area
 - s = Scenic Resource

- NOTES:**
1. Root protection zones for single-stem trees are calculated by DBH x 1-ft. Therefore, a 6-in DBH tree has a root protection zone of 6-ft in diameter. For multi-stemmed trees, see Mitigation Site Plan Details II, SHT, L.325. Root protection zones are not shown for trees to be removed or dead trees.
 2. Vine Maples and all trees with a DBH less than 6-in are not shown on these plans.
 3. South of the Harborton Substation, only trees with RPZs which overlap with the Limits of Disturbance are shown on these plans; all surveyed trees are included in the Project Site area.
 4. See Construction Management Plan set for tree protection fencing.
 5. Tax lots which intersect the Limits of Disturbance are labeled with the Tax Lot ID # and acreage.



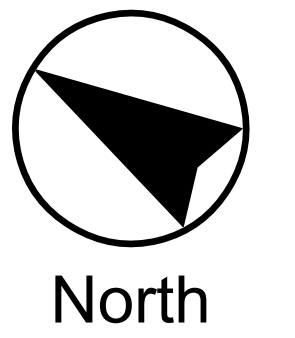
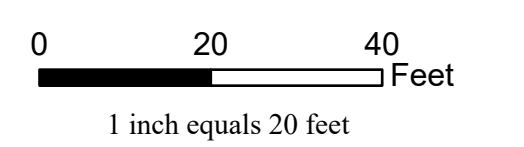
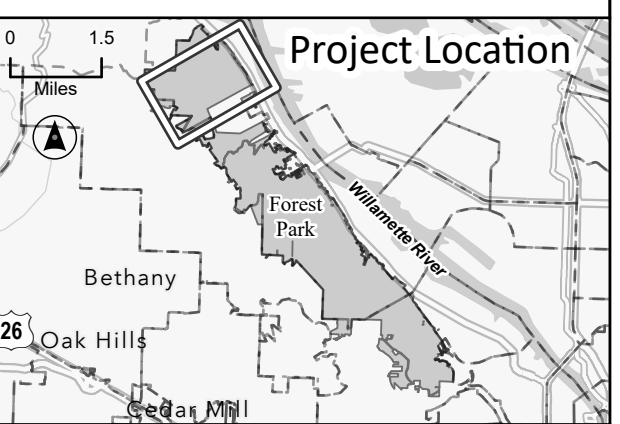


- Legend**
- Limits of Disturbance
 - Surveyed Tree Location**
 - Existing Deciduous (Living)
 - Existing Deciduous (Dead)
 - Existing Conifer (Living)
 - Existing Conifer (Dead)
 - Root Protection Zone
 - Trail
 - Edge of Existing Roadway/Access Road (Approximate)
 - Drainage Reserve Area
 - Drainage Flow
 - Wetland/Ordinary High Water (OHW)
 - Wetland Setback (50-ft)
 - Noxious Weed Concentration
 - Existing Maintenance Access Road Centerline
 - Culvert
 - 100-year Floodplain
 - Powerline Easement
 - Multnomah County Tax Lot
 - Zoning (City of Portland)
 - Environmental Transition Zone
 - Forest Park Boundary
 - Contour (5-foot intervals, vertical datum NAVD88)

- Zoning (City of Portland):**
- RF = Farm and Forest
 - IH = Heavy Industrial
 - OS = Open Space
 - c = Environmental Conservation
 - d = Design
 - g = River General
 - i = River Industrial
 - k = Prime Industrial
 - p = Environmental Protection
 - q = Water Quality Resource Area
 - s = Scenic Resource

- NOTES:**
1. Root protection zones for single-stem trees are calculated by DBH x 1-ft. Therefore, a 6-in DBH tree has a root protection zone of 6-ft in diameter. For multi-stemmed trees, see Mitigation Site Plan Details II, SHT. L325. Root protection zones are not shown for trees to be removed or dead trees.
 2. Vine Maples and all trees with a DBH less than 6-in are not shown on these plans.
 3. South of the Harborton Substation, only trees with RPZs which overlap with the Limits of Disturbance are shown on these plans; all surveyed trees are included in the Project Site area.
 4. See Construction Management Plan set for tree protection fencing.
 5. Tax lots which intersect the Limits of Disturbance are labeled with the Tax Lot ID # and acreage.

MATCHLINE SEE SHEET L006





Legend

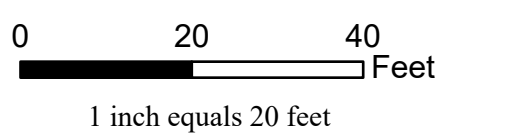
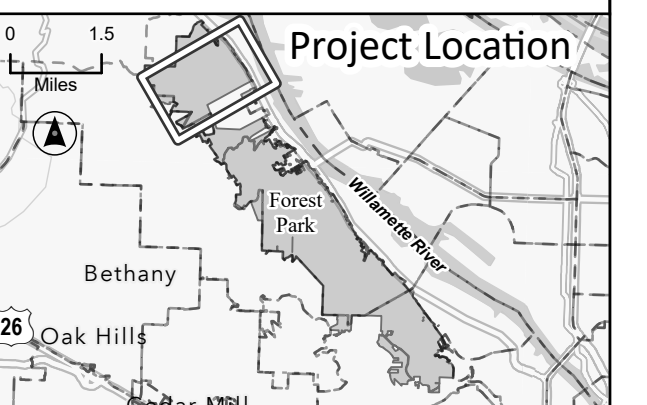
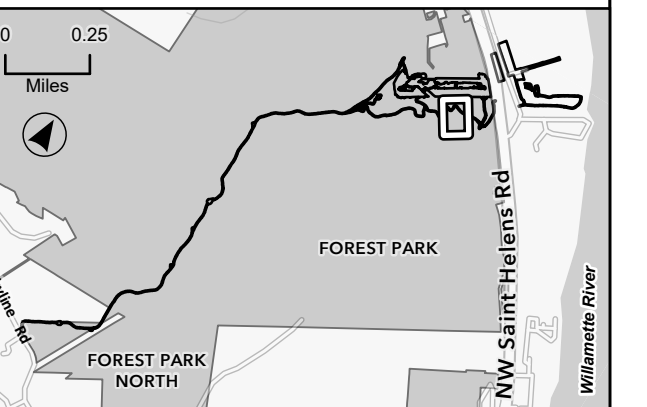
- Limits of Disturbance
- Surveyed Tree Location**
- Existing Deciduous (Living)
- Existing Deciduous (Dead)
- Existing Conifer (Living)
- Existing Conifer (Dead)
- Root Protection Zone
- Trail
- Edge of Existing Roadway/Access Road (approximate)
- Drainage Reserve Area
- Drainage Flow
- Wetland/Ordinary High Water (OHW)
- Noxious Weed Concentration
- Existing Maintenance Access Road Centerline
- Culvert
- 100-year Floodplain
- Powerline Easement
- Multnomah County Tax Lot
- Zoning (City of Portland)
- Environmental Transition Zone
- Forest Park Boundary
- Contour (5-foot intervals, vertical datum NAVD88)

Zoning (City of Portland):

- RF = Farm and Forest
- IH = Heavy Industrial
- OS = Open Space
- c = Environmental Conservation
- d = Design
- g = River General
- i = River Industrial
- k = Prime Industrial
- p = Environmental Protection
- q = Water Quality Resource Area
- s = Scenic Resource

NOTES:

1. Root protection zones for single-stem trees are calculated by DBH x 1-ft. Therefore, a 6-in DBH tree has a root protection zone of 6-ft in diameter. For multi-stemmed trees, see Mitigation Site Plan Details II, SHEET L325. Root protection zones are not shown for trees to be removed or dead trees.
2. Vine Maples and all trees with a DBH less than 6-in are not shown on these plans.
3. South of the Harborton Substation, only trees with RPZs which overlap with the Limits of Disturbance are shown on these plans; all surveyed trees are included in the Project Site area.
4. See Construction Management Plan set for tree protection fencing.
5. Tax lots which intersect the Limits of Disturbance are labeled with the Tax Lot ID # and acreage.



MATCHLINE SEE SHEET L009

MATCHLINE SEE SHEET L006

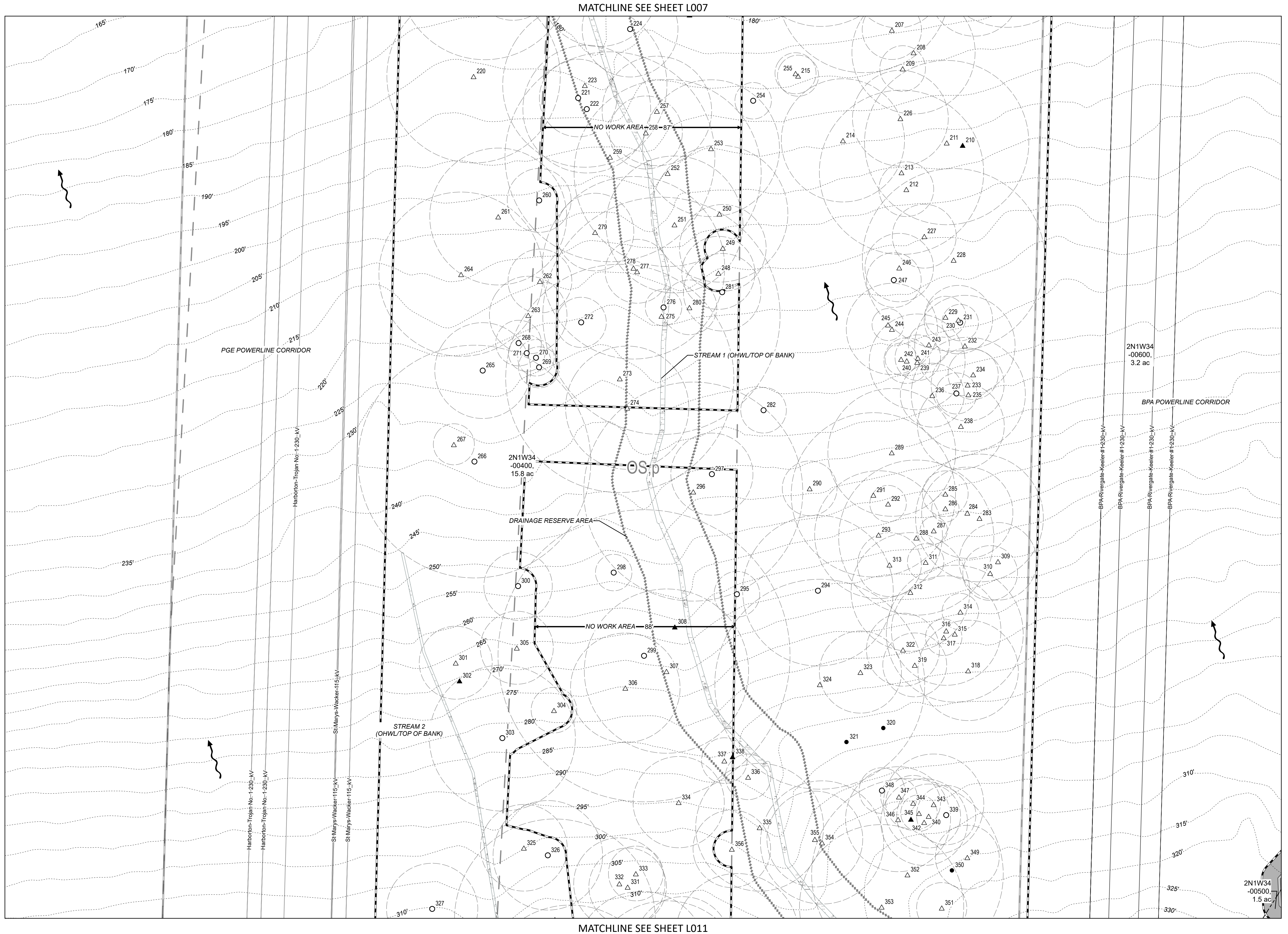
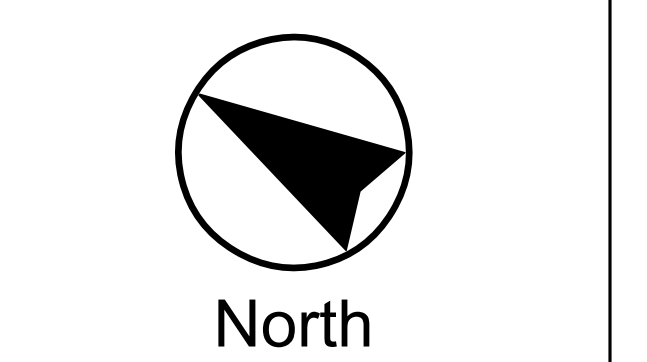
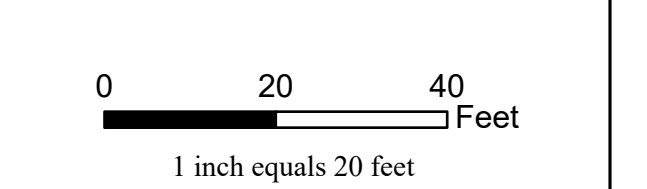
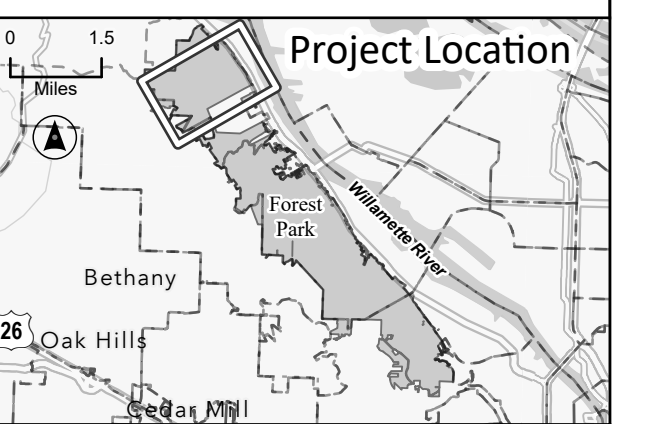
MATCHLINE SEE SHEET L010



- Legend**
- Limits of Disturbance
 - Surveyed Tree Location**
 - Existing Deciduous (Living)
 - Existing Deciduous (Dead)
 - Existing Conifer (Living)
 - Existing Conifer (Dead)
 - Root Protection Zone
 - Trail
 - Edge of Existing Roadway/Access Road (approximate)
 - Drainage Reserve Area
 - Drainage Flow
 - Wetland/Ordinary High Water (OHW)
 - Noxious Weed Concentration
 - Existing Maintenance Access Road Centerline
 - Culvert
 - 100-year Floodplain
 - Powerline Easement
 - Multnomah County Tax Lot
 - Zoning (City of Portland)
 - Environmental Transition Zone
 - Forest Park Boundary
 - Contour (5-foot intervals, vertical datum NAVD88)

- Zoning (City of Portland):**
- RF = Farm and Forest
 - IH = Heavy Industrial
 - OS = Open Space
 - c = Environmental Conservation
 - d = Design
 - g = River General
 - i = River Industrial
 - k = Prime Industrial
 - p = Environmental Protection
 - q = Water Quality Resource Area
 - s = Scenic Resource

- NOTES:**
1. Root protection zones for single-stem trees are calculated by DBH x 1-ft. Therefore, a 6-in DBH tree has a root protection zone of 6-ft in diameter. For multi-stemmed trees, see Mitigation Site Plan Details II, SHT. I.325. Root protection zones are not shown for trees to be removed or dead trees.
 2. Vine Maples and all trees with a DBH less than 6-in are not shown on these plans.
 3. South of the Harborton Substation, only trees with RPZs which overlap with the Limits of Disturbance are shown on these plans; all surveyed trees are included in the Project Site area.
 4. See Construction Management Plan set for tree protection fencing.
 5. Tax lots which intersect the Limits of Disturbance are labeled with the Tax Lot ID # and acreage.



MATCHLINE SEE SHEET L007

MATCHLINE SEE SHEET L011

MATCHLINE SEE SHEET L008

2N1W34-00500, 1.5 ac

2N1W34-00600, 3.2 ac

2N1W34-00400, 15.8 ac

PGE POWERLINE CORRIDOR

BPA POWERLINE CORRIDOR

STREAM 2 (OHWL/TOP OF BANK)

STREAM 1 (OHWL/TOP OF BANK)

DRAINAGE RESERVE AREA

NO WORK AREA - 258 - 87'

NO WORK AREA - 88'

Harborton-Trojan No. 1-230-KV

St Marys-Wacker 115-KV

BPA Rivergate-Keeler #1-230-KV

BPA Rivergate-Keeler #1-230-KV

BPA Rivergate-Keeler #1-230-KV

BPA Rivergate-Keeler #1-230-KV

Harborton-Trojan No. 1-230-KV

St Marys-Wacker 115-KV

2N1W34-00500, 1.5 ac

MATCHLINE SEE SHEET L008



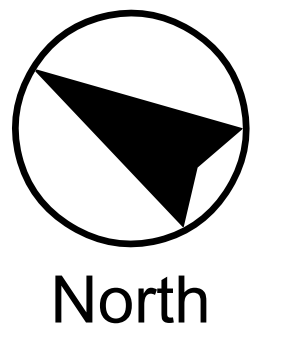
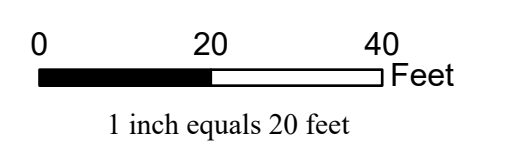
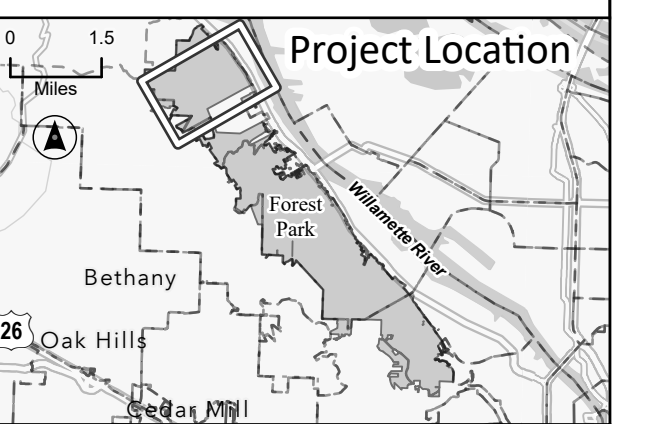
MATCHLINE SEE SHEET L011



- Legend**
- Limits of Disturbance
 - Surveyed Tree Location
 - Existing Deciduous (Living)
 - Existing Deciduous (Dead)
 - Existing Conifer (Living)
 - Existing Conifer (Dead)
 - Root Protection Zone
 - Trail
 - Edge of Existing Roadway/Access Road (approximate)
 - Drainage Reserve Area
 - Drainage Flow
 - Wetland/Ordinary High Water (OHW)
 - Noxious Weed Concentration
 - Existing Maintenance Access Road Centerline
 - Culvert
 - 100-year Floodplain
 - Powerline Easement
 - Multnomah County Tax Lot
 - Zoning (City of Portland)
 - Environmental Transition Zone
 - Forest Park Boundary
 - Contour (5-foot intervals, vertical datum NAVD88)

- Zoning (City of Portland):**
- RF = Farm and Forest
 - IH = Heavy Industrial
 - OS = Open Space
 - c = Environmental Conservation
 - d = Design
 - g = River General
 - i = River Industrial
 - k = Prime Industrial
 - p = Environmental Protection
 - q = Water Quality Resource Area
 - s = Scenic Resource

- NOTES:**
1. Root protection zones for single-stem trees are calculated by DBH x 1-ft. Therefore, a 6-in DBH tree has a root protection zone of 6-ft in diameter. For multi-stemmed trees, see Mitigation Site Plan Details II, SHT. L.325. Root protection zones are not shown for trees to be removed or dead trees.
 2. Vine Maples and all trees with a DBH less than 6-in are not shown on these plans.
 3. South of the Harborton Substation, only trees with RPZs which overlap with the Limits of Disturbance are shown on these plans; all surveyed trees are included in the Project Site area.
 4. See Construction Management Plan set for tree protection fencing.
 5. Tax lots which intersect the Limits of Disturbance are labeled with the Tax Lot ID # and acreage.



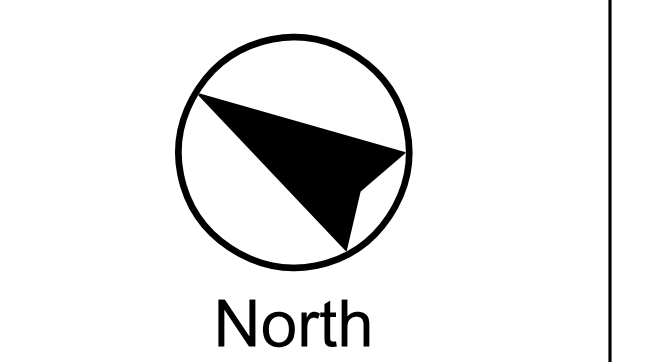
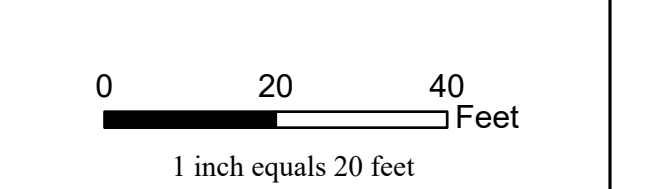
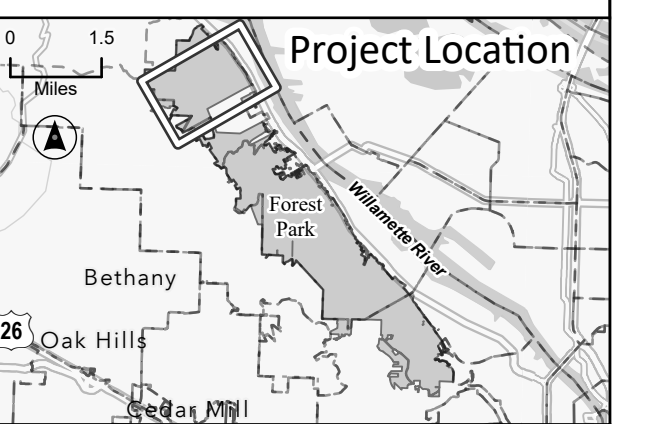
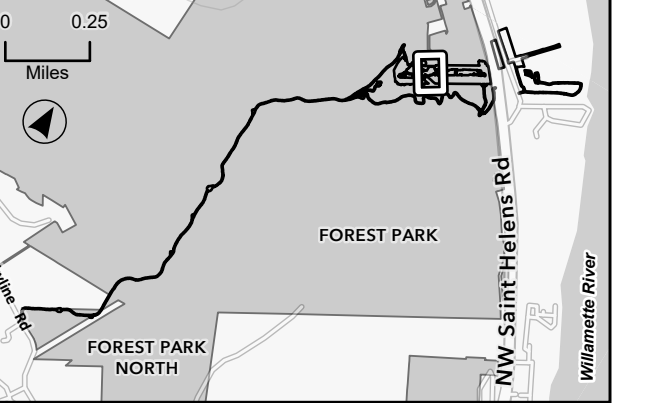
MATCHLINE SEE SHEET L011



- Legend**
- Limits of Disturbance
 - Surveyed Tree Location**
 - Existing Deciduous (Living)
 - Existing Deciduous (Dead)
 - Existing Conifer (Living)
 - Existing Conifer (Dead)
 - Root Protection Zone
 - Trail
 - Edge of Existing Roadway/Access Road (approximate)
 - Drainage Reserve Area
 - Drainage Flow
 - Wetland/Ordinary High Water (OHW)
 - Noxious Weed Concentration
 - Existing Maintenance Access Road Centerline
 - Culvert
 - 100-year Floodplain
 - Powerline Easement
 - Multnomah County Tax Lot
 - Zoning (City of Portland)
 - Environmental Transition Zone
 - Forest Park Boundary
 - Contour (5-foot intervals, vertical datum NAVD88)

- Zoning (City of Portland):**
- RF = Farm and Forest
 - IH = Heavy Industrial
 - OS = Open Space
 - c = Environmental Conservation
 - d = Design
 - g = River General
 - i = River Industrial
 - k = Prime Industrial
 - p = Environmental Protection
 - q = Water Quality Resource Area
 - s = Scenic Resource

- NOTES:**
1. Root protection zones for single-stem trees are calculated by DBH x 1-ft. Therefore, a 6-in DBH tree has a root protection zone of 6-ft in diameter. For multi-stemmed trees, see Mitigation Site Plan Details II, SHT 1.325. Root protection zones are not shown for trees to be removed or dead trees.
 2. Vine Maples and all trees with a DBH less than 6-in are not shown on these plans.
 3. South of the Harborton Substation, only trees with RPZs which overlap with the Limits of Disturbance are shown on these plans; all surveyed trees are included in the Project Site area.
 4. See Construction Management Plan set for tree protection fencing.
 5. Tax lots which intersect the Limits of Disturbance are labeled with the Tax Lot ID # and acreage.



MATCHLINE SEE SHEET L009

MATCHLINE SEE SHEET L013

MATCHLINE SEE SHEET L010

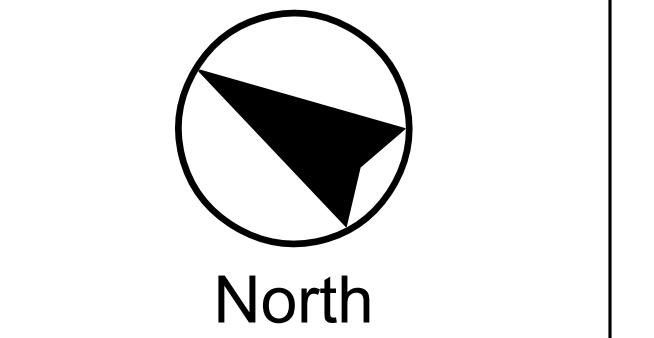
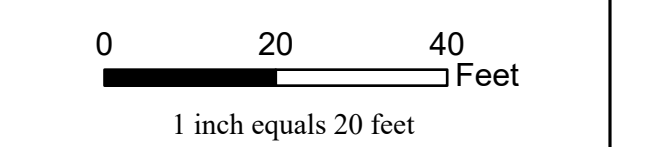
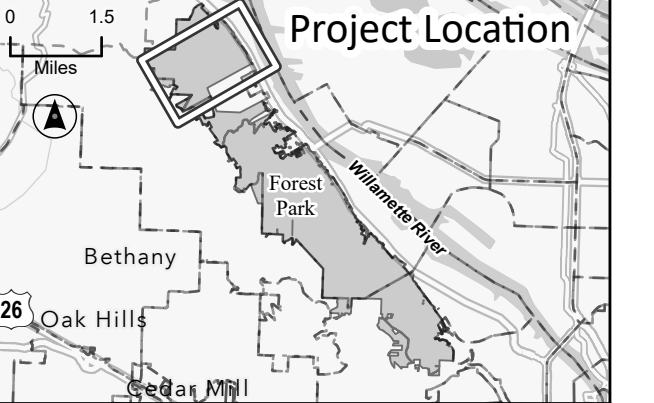
MATCHLINE SEE SHEET L010, L011



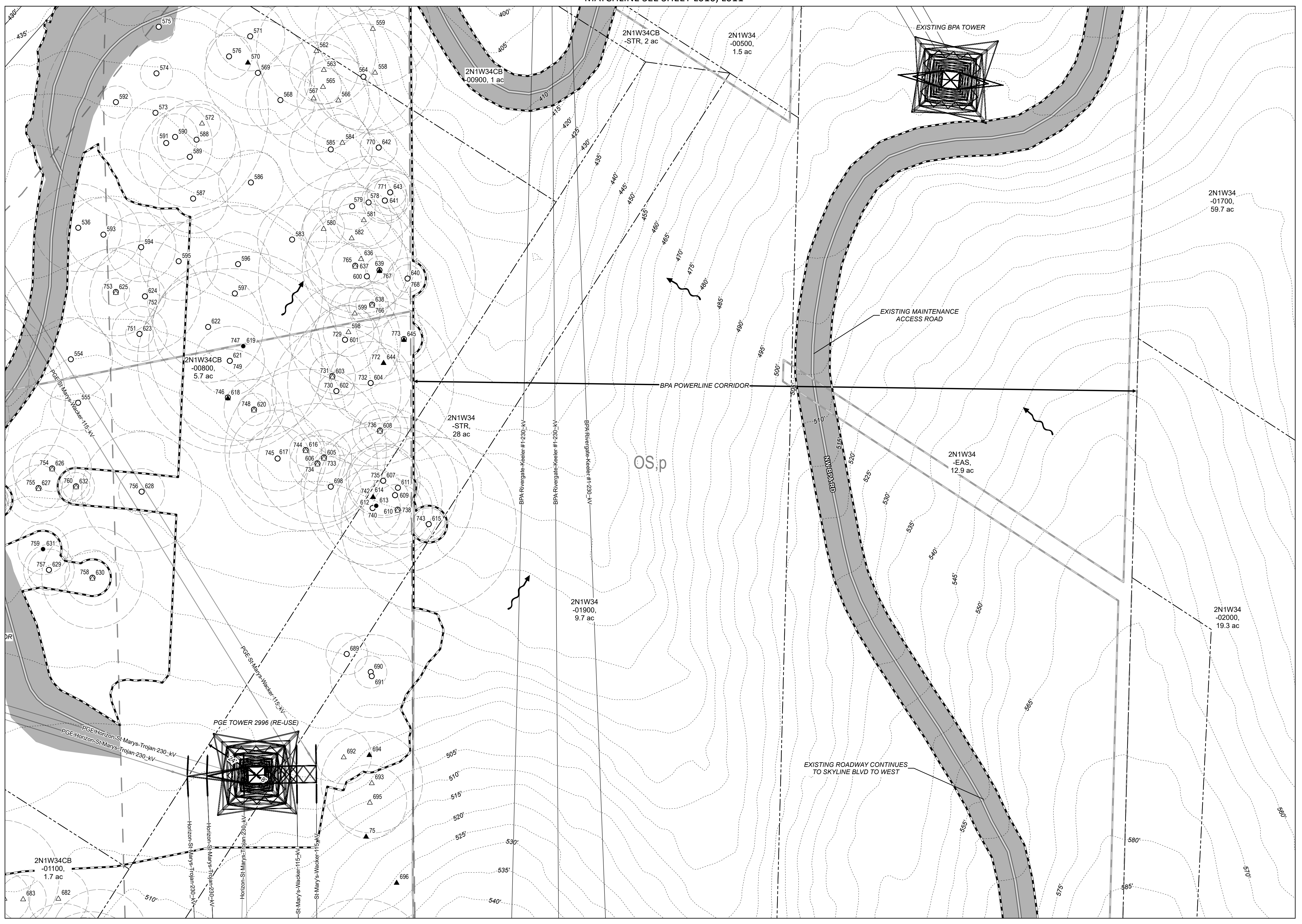
- Legend**
- Limits of Disturbance
 - Surveyed Tree Location**
 - Existing Deciduous (Living)
 - Existing Deciduous (Dead)
 - Existing Conifer (Living)
 - Existing Conifer (Dead)
 - Root Protection Zone
 - Trail
 - Edge of Existing Roadway/Access Road (approximate)
 - Drainage Reserve Area
 - Drainage Flow
 - Wetland/Ordinary High Water (OHW)
 - Noxious Weed Concentration
 - Existing Maintenance Access Road Centerline
 - Culvert
 - 100-year Floodplain
 - Powerline Easement
 - Multnomah County Tax Lot
 - Zoning (City of Portland)
 - Environmental Transition Zone
 - Forest Park Boundary
 - Contour (5-foot intervals, vertical datum NAVD88)

- Zoning (City of Portland):**
- RF = Farm and Forest
 - IH = Heavy Industrial
 - OS = Open Space
 - c = Environmental Conservation
 - d = Design
 - g = River General
 - i = River Industrial
 - k = Prime Industrial
 - p = Environmental Protection
 - q = Water Quality Resource Area
 - s = Scenic Resource

- NOTES:**
1. Root protection zones for single-stem trees are calculated by DBH x 1-ft. Therefore, a 6-in DBH tree has a root protection zone of 6-ft in diameter. For multi-stemmed trees, see Mitigation Site Plan Details II, SHT. I.325. Root protection zones are not shown for trees to be removed or dead trees.
 2. Vine Maples and all trees with a DBH less than 6-in are not shown on these plans.
 3. South of the Harborton Substation, only trees with RPZs which overlap with the Limits of Disturbance are shown on these plans; all surveyed trees are included in the Project Site area.
 4. See Construction Management Plan set for tree protection fencing.
 5. Tax lots which intersect the Limits of Disturbance are labeled with the Tax Lot ID # and acreage.



MATCHLINE SEE SHEET L013



MATCHLINE SEE SHEET L014, L015

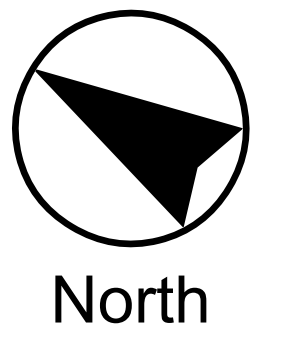
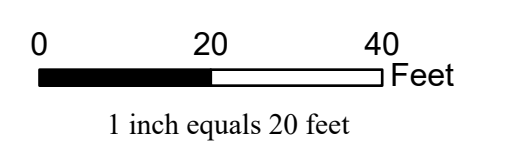
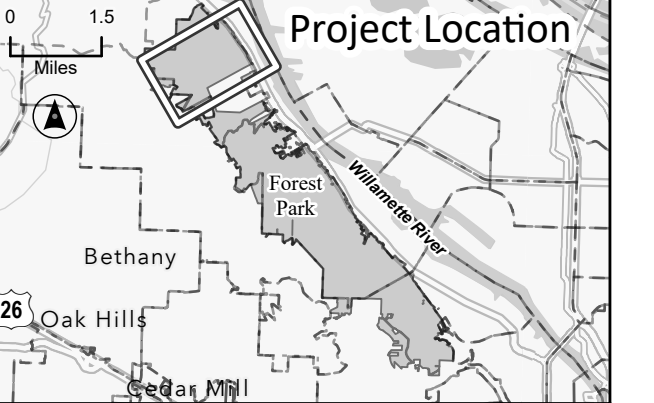
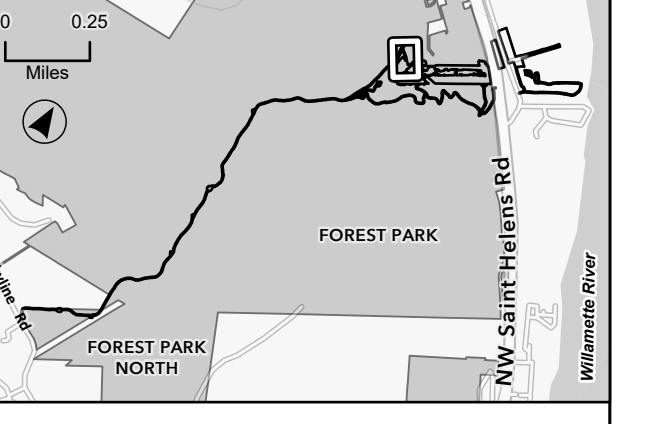


- Legend**
- Limits of Disturbance
 - Surveyed Tree Location**
 - Existing Deciduous (Living)
 - Existing Deciduous (Dead)
 - Existing Conifer (Living)
 - Existing Conifer (Dead)
 - Root Protection Zone
 - Trail
 - Edge of Existing Roadway/Access Road (approximate)
 - Drainage Reserve Area
 - Drainage Flow
 - Wetland/Ordinary High Water (OHW)
 - Noxious Weed Concentration
 - Existing Maintenance Access Road Centerline
 - Culvert
 - 100-year Floodplain
 - Powerline Easement
 - Multnomah County Tax Lot
 - Zoning (City of Portland)
 - Environmental Transition Zone
 - Forest Park Boundary
 - Contour (5-foot intervals, vertical datum NAVD88)

- Zoning (City of Portland):**
 RF = Farm and Forest
 IH = Heavy Industrial
 OS = Open Space
 c = Environmental Conservation
 d = Design
 g = River General
 i = River Industrial
 k = Prime Industrial
 p = Environmental Protection
 q = Water Quality Resource Area
 s = Scenic Resource

- NOTES:**
1. Root protection zones for single-stem trees are calculated by DBH x 1-ft. Therefore, a 6-in DBH tree has a root protection zone of 6-ft in diameter. For multi-stemmed trees, see Mitigation Site Plan Details II, SHEET L325. Root protection zones are not shown for trees to be removed or dead trees.
 2. Vine Maples and all trees with a DBH less than 6-in are not shown on these plans.
 3. South of the Harborton Substation, only trees with RPZs which overlap with the Limits of Disturbance are shown on these plans; all surveyed trees are included in the Project Site area.
 4. See Construction Management Plan set for tree protection fencing.
 5. Tax lots which intersect the Limits of Disturbance are labeled with the Tax Lot ID # and acreage.

MATCHLINE SEE SHEET L012



MATCHLINE SEE SHEET L012

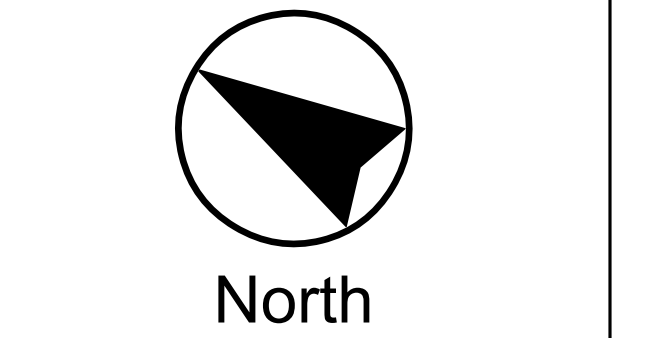
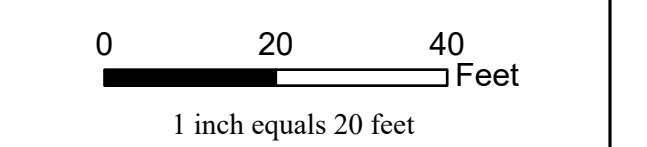
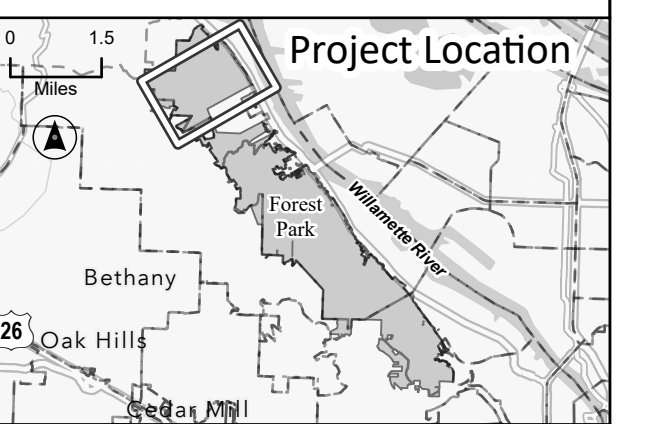
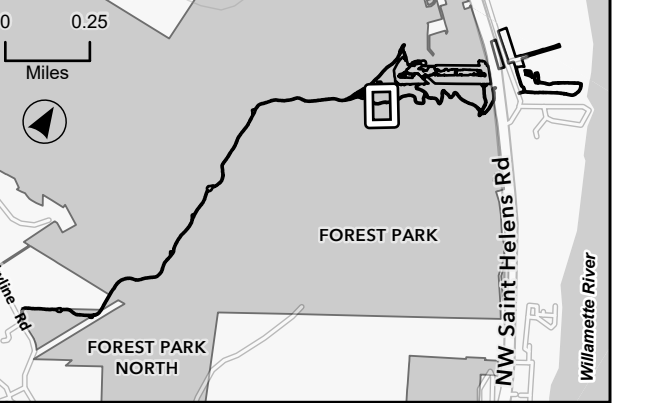


10/23/2024

- Legend**
- Limits of Disturbance
 - Surveyed Tree Location**
 - Existing Deciduous (Living)
 - Existing Deciduous (Dead)
 - Existing Conifer (Living)
 - Existing Conifer (Dead)
 - Root Protection Zone
 - Trail
 - Edge of Existing Roadway/Access Road (approximate)
 - Drainage Reserve Area
 - Drainage Flow
 - Wetland/Ordinary High Water (OHW)
 - Noxious Weed Concentration
 - Existing Maintenance Access Road Centerline
 - Culvert
 - 100-year Floodplain
 - Powerline Easement
 - Multnomah County Tax Lot
 - Zoning (City of Portland)
 - Environmental Transition Zone
 - Forest Park Boundary
 - Contour (5-foot intervals, vertical datum NAVD88)

- Zoning (City of Portland):**
- RF = Farm and Forest
 - IH = Heavy Industrial
 - OS = Open Space
 - c = Environmental Conservation
 - d = Design
 - g = River General
 - i = River Industrial
 - k = Prime Industrial
 - p = Environmental Protection
 - q = Water Quality Resource Area
 - s = Scenic Resource

- NOTES:**
1. Root protection zones for single-stem trees are calculated by DBH x 1-ft. Therefore, a 6-in DBH tree has a root protection zone of 6-ft in diameter. For multi-stemmed trees, see Mitigation Site Plan Details II, SHEET L.325. Root protection zones are not shown for trees to be removed or dead trees.
 2. Vine Maples and all trees with a DBH less than 6-in are not shown on these plans.
 3. South of the Harborton Substation, only trees with RPZs which overlap with the Limits of Disturbance are shown on these plans; all surveyed trees are included in the Project Site area.
 4. See Construction Management Plan set for tree protection fencing.
 5. Tax lots which intersect the Limits of Disturbance are labeled with the Tax Lot ID # and acreage.



MATCHLINE SEE SHEET L015



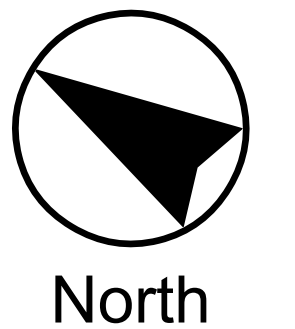
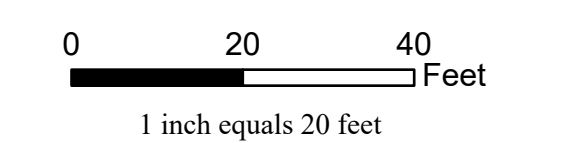
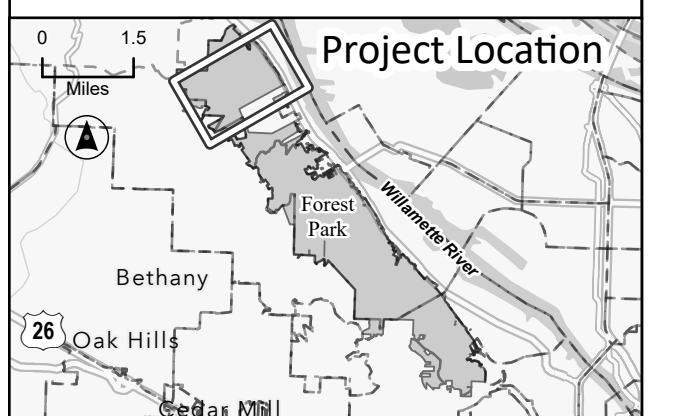
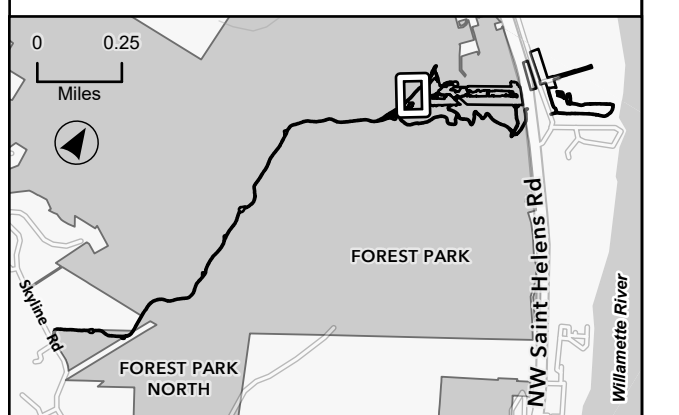
MATCHLINE SEE SHEET L016



- Legend**
- Limits of Disturbance
 - Surveyed Tree Location**
 - Existing Deciduous (Living)
 - Existing Deciduous (Dead)
 - Existing Conifer (Living)
 - Existing Conifer (Dead)
 - Root Protection Zone
 - Trail
 - Edge of Existing Roadway/Access Road (approximate)
 - Drainage Reserve Area
 - Drainage Flow
 - Wetland/Ordinary High Water (OHW)
 - Noxious Weed Concentration
 - Existing Maintenance Access Road Centerline
 - Culvert
 - 100-year Floodplain
 - Powerline Easement
 - Multnomah County Tax Lot
 - Zoning (City of Portland)
 - Environmental Transition Zone
 - Forest Park Boundary
 - Contour (5-foot intervals, vertical datum NAVD88)

- Zoning (City of Portland):**
- RF = Farm and Forest
 - IH = Heavy Industrial
 - OS = Open Space
 - c = Environmental Conservation
 - d = Design
 - g = River General
 - i = River Industrial
 - k = Prime Industrial
 - p = Environmental Protection
 - q = Water Quality Resource Area
 - s = Scenic Resource

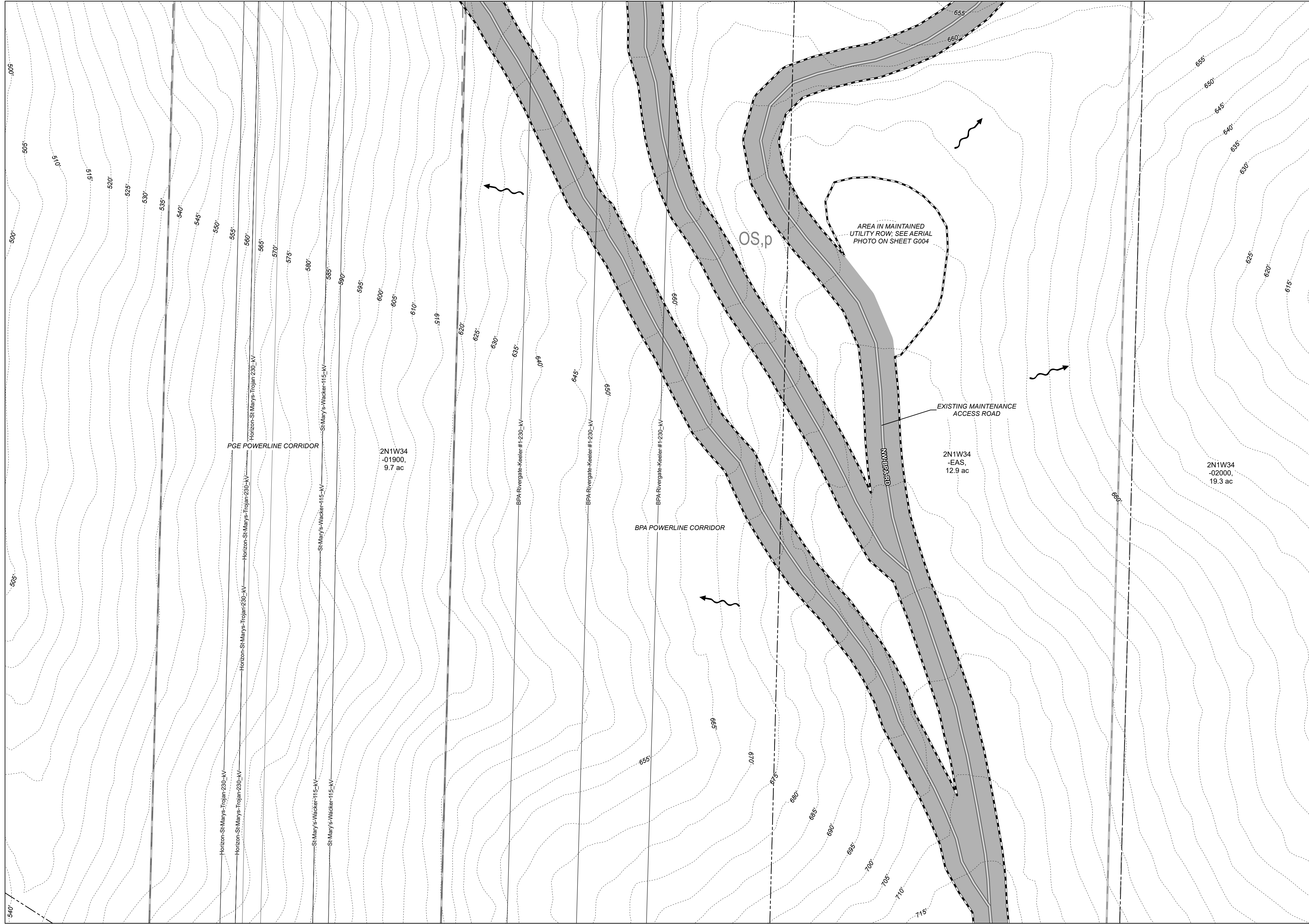
- NOTES:**
1. Root protection zones for single-stem trees are calculated by DBH x 1-ft. Therefore, a 6-in DBH tree has a root protection zone of 6-ft in diameter. For multi-stemmed trees, see Mitigation Site Plan Details II, SHEET L325. Root protection zones are not shown for trees to be removed or dead trees.
 2. Vine Maples and all trees with a DBH less than 6-in are not shown on these plans.
 3. South of the Harborton Substation, only trees with RPZs which overlap with the Limits of Disturbance are shown on these plans; all surveyed trees are included in the Project Site area.
 4. See Construction Management Plan set for tree protection fencing.
 5. Tax lots which intersect the Limits of Disturbance are labeled with the Tax Lot ID # and acreage.



MATCHLINE SEE SHEET L014



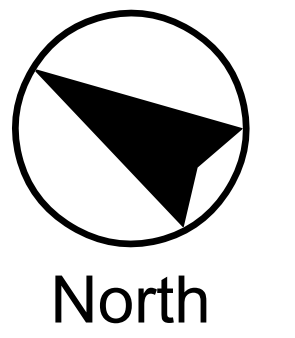
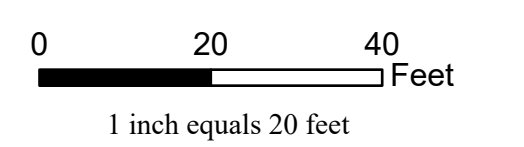
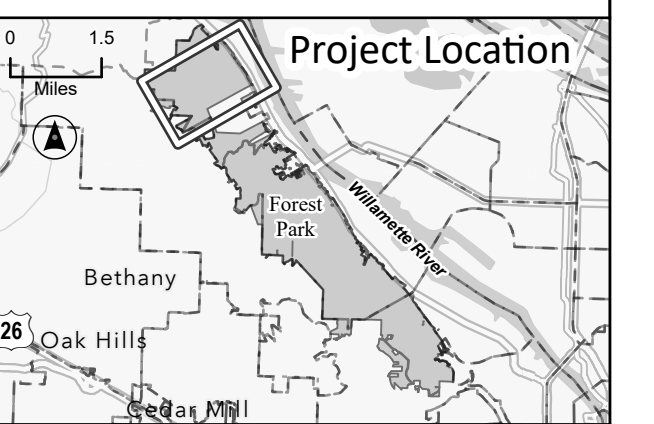
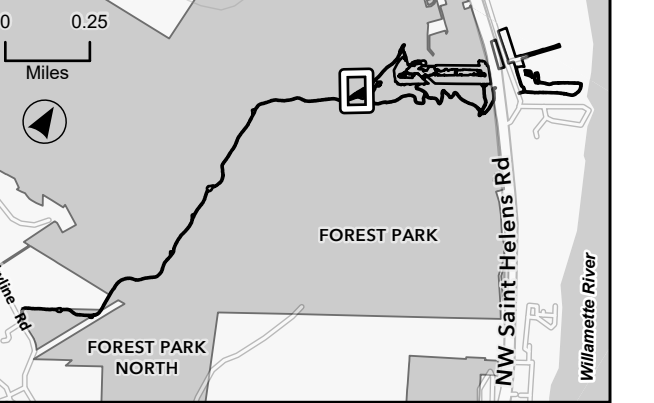
MATCHLINE SEE SHEET L013



- Legend**
- Limits of Disturbance
 - Surveyed Tree Location
 - Existing Deciduous (Living)
 - Existing Deciduous (Dead)
 - Existing Conifer (Living)
 - Existing Conifer (Dead)
 - Root Protection Zone
 - Trail
 - Edge of Existing Roadway/Access Road (approximate)
 - Drainage Reserve Area
 - Drainage Flow
 - Wetland/Ordinary High Water (OHW)
 - Noxious Weed Concentration
 - Existing Maintenance Access Road Centerline
 - Culvert
 - 100-year Floodplain
 - Powerline Easement
 - Multnomah County Tax Lot
 - Zoning (City of Portland)
 - Environmental Transition Zone
 - Forest Park Boundary
 - Contour (5-foot intervals, vertical datum NAVD88)

- Zoning (City of Portland):**
- RF = Farm and Forest
 - IH = Heavy Industrial
 - OS = Open Space
 - c = Environmental Conservation
 - d = Design
 - g = River General
 - i = River Industrial
 - k = Prime Industrial
 - p = Environmental Protection
 - q = Water Quality Resource Area
 - s = Scenic Resource

- NOTES:**
1. Root protection zones for single-stem trees are calculated by DBH x 1-ft. Therefore, a 6-in DBH tree has a root protection zone of 6-ft in diameter. For multi-stemmed trees, see Mitigation Site Plan Details II, SHT. I.325. Root protection zones are not shown for trees to be removed or dead trees.
 2. Vine Maples and all trees with a DBH less than 6-in are not shown on these plans.
 3. South of the Harborton Substation, only trees with RPZs which overlap with the Limits of Disturbance are shown on these plans; all surveyed trees are included in the Project Site area.
 4. See Construction Management Plan set for tree protection fencing.
 5. Tax lots which intersect the Limits of Disturbance are labeled with the Tax Lot ID # and acreage.





Legend

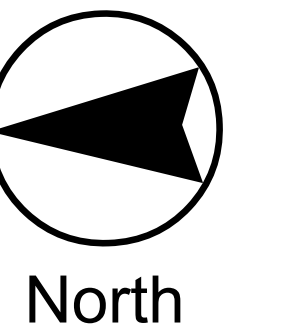
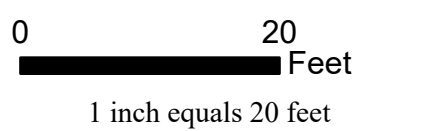
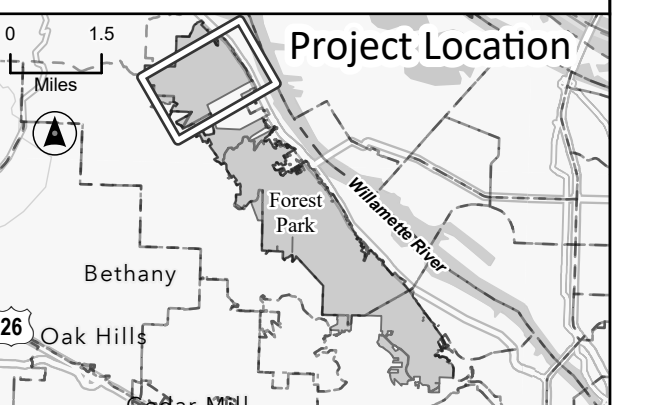
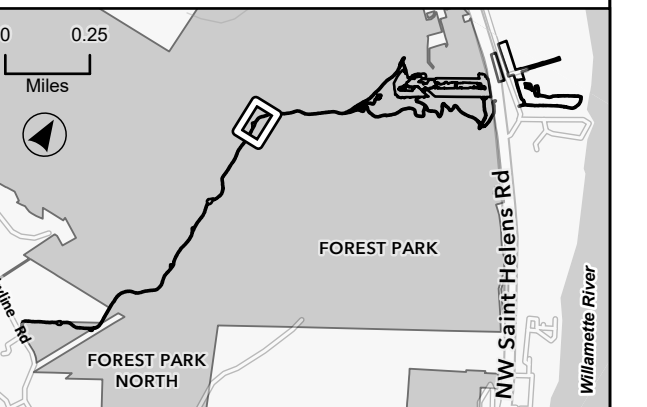
- Limits of Disturbance
- Surveyed Tree Location
 - Existing Deciduous (Living)
 - Existing Deciduous (Dead)
 - Existing Conifer (Living)
 - Existing Conifer (Dead)
 - Root Protection Zone
 - Trail
- Edge of Existing Roadway/Access Road (approximate)
- Drainage Reserve Area
- Drainage Flow
- Wetland/Ordinary High Water (OHW)
- Noxious Weed Concentration
- Existing Maintenance Access Road Centerline
- Culvert
- 100-year Floodplain
- Powerline Easement
- Multnomah County Tax Lot
- Zoning (City of Portland)
- Environmental Transition Zone
- Forest Park Boundary
- Contour (5-foot intervals, vertical datum NAVD88)

Zoning (City of Portland):

- RF = Farm and Forest
- IH = Heavy Industrial
- OS = Open Space
- c = Environmental Conservation
- d = Design
- g = River General
- i = River Industrial
- k = Prime Industrial
- p = Environmental Protection
- q = Water Quality Resource Area
- s = Scenic Resource

NOTES:

1. Root protection zones for single-stem trees are calculated by DBH x 1-ft. Therefore, a 6-in DBH tree has a root protection zone of 6-ft in diameter. For multi-stemmed trees, see Mitigation Site Plan Details II, SHT, L325. Root protection zones are not shown for trees to be removed or dead trees.
2. Vine Maples and all trees with a DBH less than 6-in are not shown on these plans.
3. South of the Harborton Substation, only trees with RPZs which overlap with the Limits of Disturbance are shown on these plans; all surveyed trees are included in the Project Site area.
4. See Construction Management Plan set for tree protection fencing.
5. Tax lots which intersect the Limits of Disturbance are labeled with the Tax Lot ID # and acreage.





Legend

- Limits of Disturbance
- Surveyed Tree Location
- Existing Deciduous (Living)
- Existing Deciduous (Dead)
- Existing Conifer (Living)
- Existing Conifer (Dead)
- Root Protection Zone
- Trail
- Edge of Existing Roadway/Access Road (approximate)
- Drainage Reserve Area
- Drainage Flow
- Wetland/Ordinary High Water (OHW)
- Noxious Weed Concentration
- Existing Maintenance Access Road Centerline
- Culvert
- 100-year Floodplain
- Powerline Easement
- Multnomah County Tax Lot
- Zoning (City of Portland)
- Environmental Transition Zone
- Forest Park Boundary
- Contour (5-foot intervals, vertical datum NAVD88)

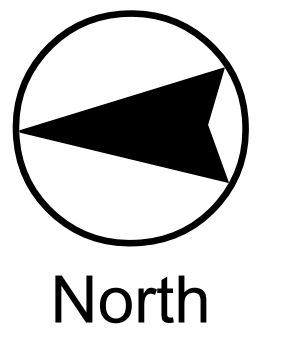
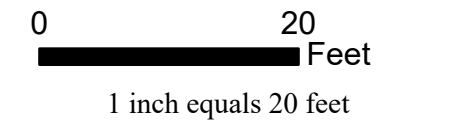
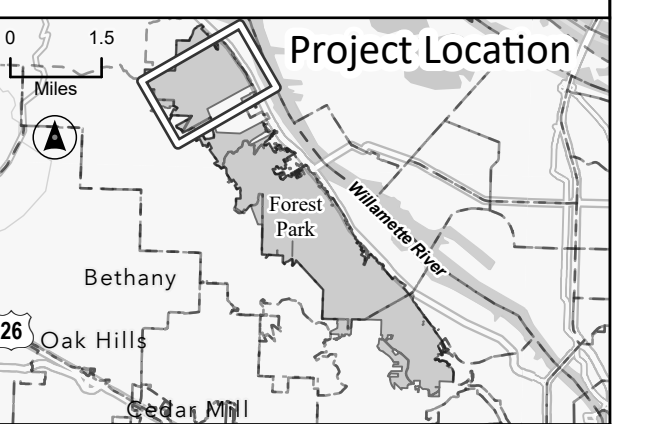
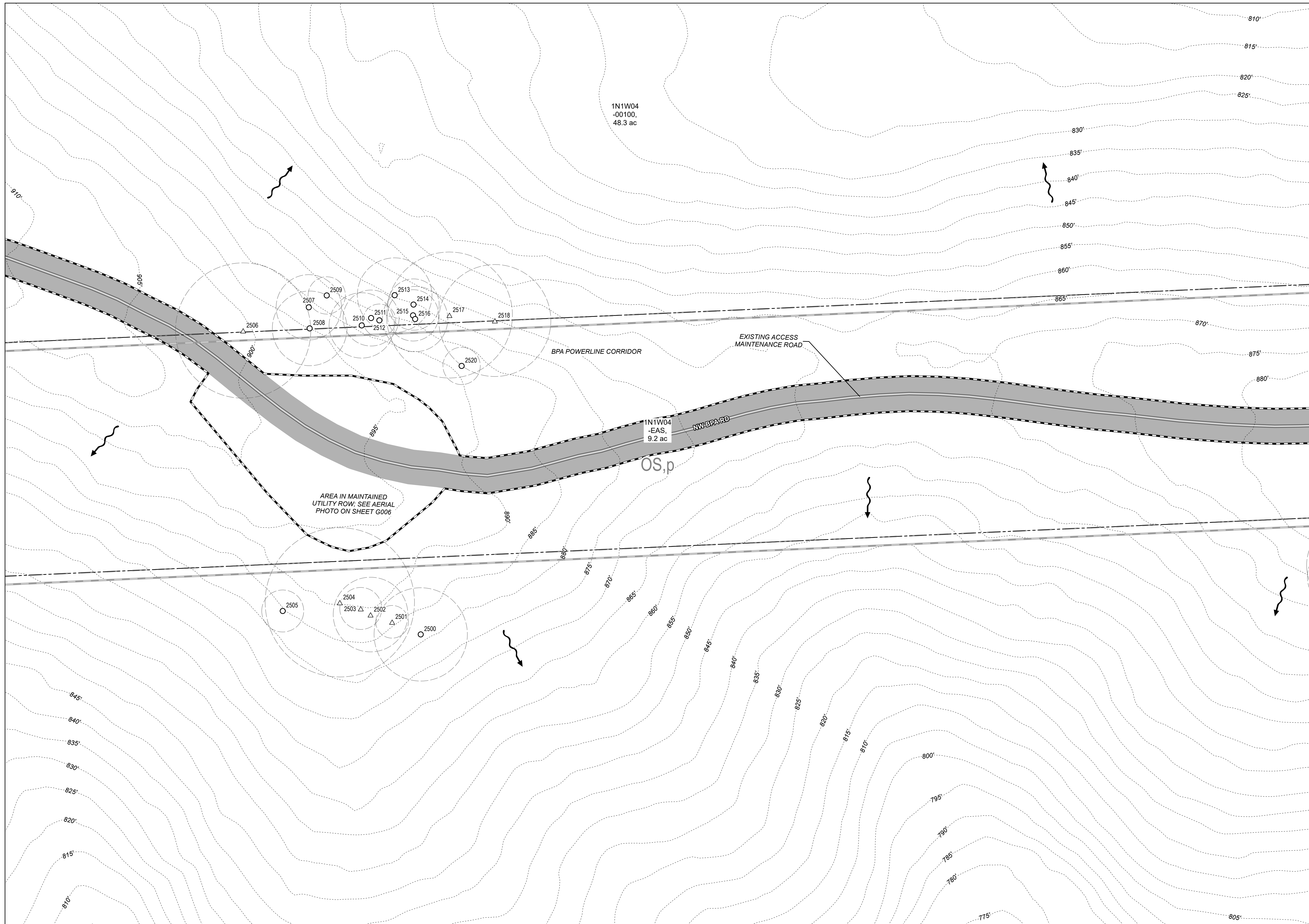
Zoning (City of Portland):

- RF = Farm and Forest
- IH = Heavy Industrial
- OS = Open Space
- c = Environmental Conservation
- d = Design
- g = River General
- i = River Industrial
- k = Prime Industrial
- p = Environmental Protection
- q = Water Quality Resource Area
- s = Scenic Resource

NOTES:

1. Root protection zones for single-stem trees are calculated by DBH x 1-ft. Therefore, a 6-in DBH tree has a root protection zone of 6-ft in diameter. For multi-stemmed trees, see Mitigation Site Plan Details II, SHEET L325. Root protection zones are not shown for trees to be removed or dead trees.
2. Vine Maples and all trees with a DBH less than 6-in are not shown on these plans.
3. South of the Harborton Substation, only trees with RPZs which overlap with the Limits of Disturbance are shown on these plans; all surveyed trees are included in the Project Site area.
4. See Construction Management Plan set for tree protection fencing.
5. Tax lots which intersect the Limits of Disturbance are labeled with the Tax Lot ID # and acreage.

MATCHLINE SEE SHEET L019





Legend

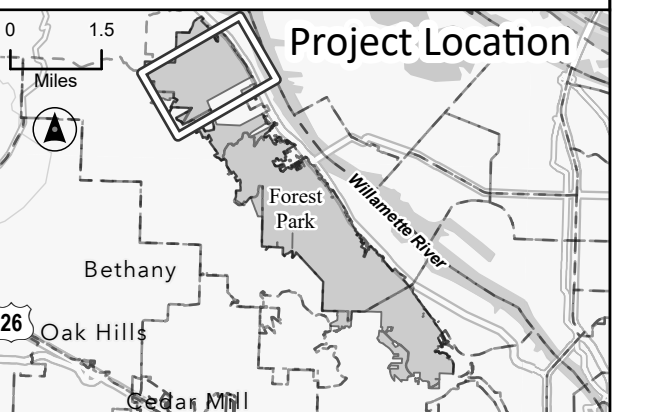
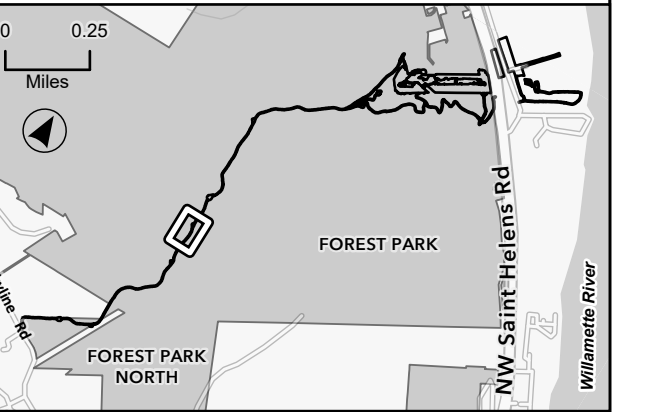
- Limits of Disturbance
- Surveyed Tree Location
- Existing Deciduous (Living)
- Existing Deciduous (Dead)
- Existing Conifer (Living)
- Existing Conifer (Dead)
- Root Protection Zone
- Trail
- Edge of Existing Roadway/Access Road (approximate)
- Drainage Reserve Area
- Drainage Flow
- Wetland/Ordinary High Water (OHW)
- Noxious Weed Concentration
- Existing Maintenance Access Road Centerline
- Culvert
- 100-year Floodplain
- Powerline Easement
- Multnomah County Tax Lot
- Zoning (City of Portland)
- Environmental Transition Zone
- Forest Park Boundary
- Contour (5-foot intervals, vertical datum NAVD88)

Zoning (City of Portland):

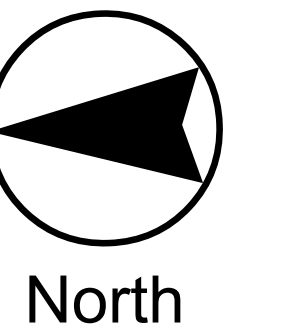
- RF = Farm and Forest
- IH = Heavy Industrial
- OS = Open Space
- c = Environmental Conservation
- d = Design
- g = River General
- i = River Industrial
- k = Prime Industrial
- p = Environmental Protection
- q = Water Quality Resource Area
- s = Scenic Resource

NOTES:

1. Root protection zones for single-stem trees are calculated by DBH x 1-ft. Therefore, a 6-in DBH tree has a root protection zone of 6-ft in diameter. For multi-stemmed trees, see Mitigation Site Plan Details II, SHT. L.325. Root protection zones are not shown for trees to be removed or dead trees.
2. Vine Maples and all trees with a DBH less than 6-in are not shown on these plans.
3. South of the Harborton Substation, only trees with RPZs which overlap with the Limits of Disturbance are shown on these plans; all surveyed trees are included in the Project Site area.
4. See Construction Management Plan set for tree protection fencing.
5. Tax lots which intersect the Limits of Disturbance are labeled with the Tax Lot ID # and acreage.

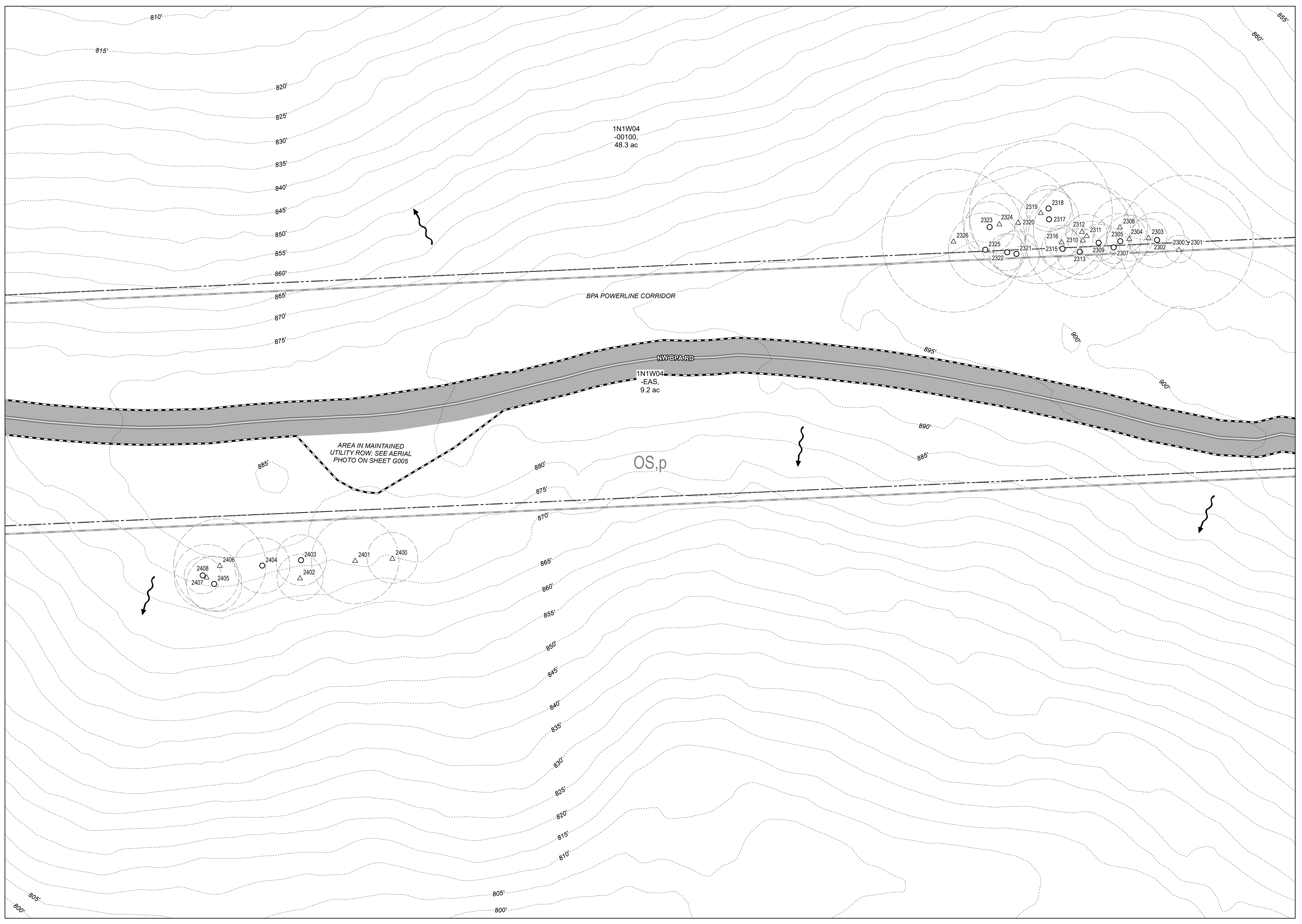


0 20 Feet
1 inch equals 20 feet



MATCHLINE SEE SHEET L018

MATCHLINE SEE SHEET L020

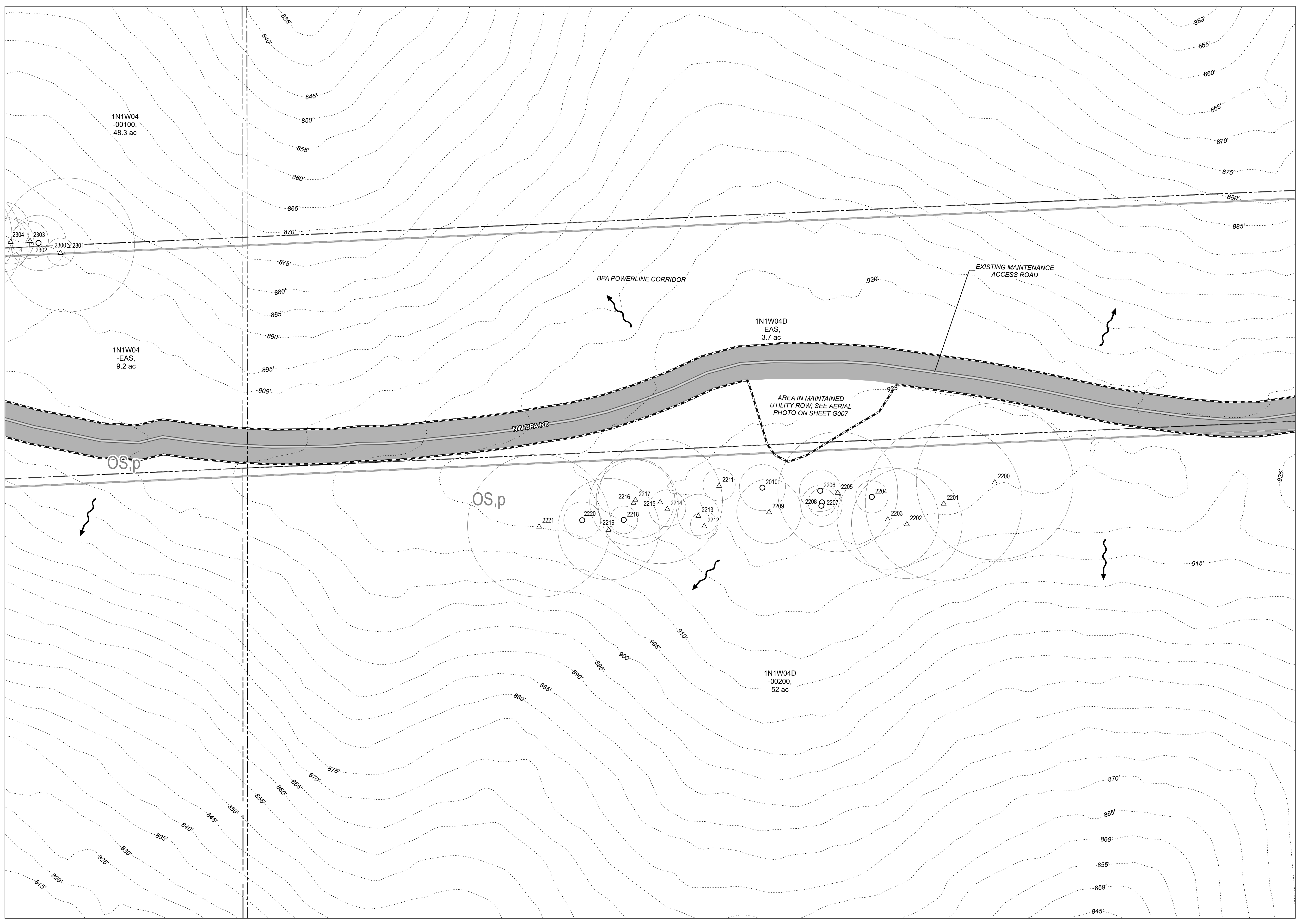
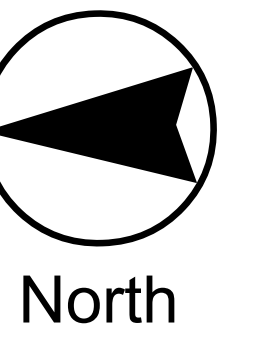
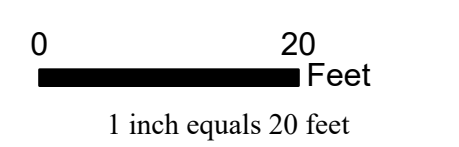
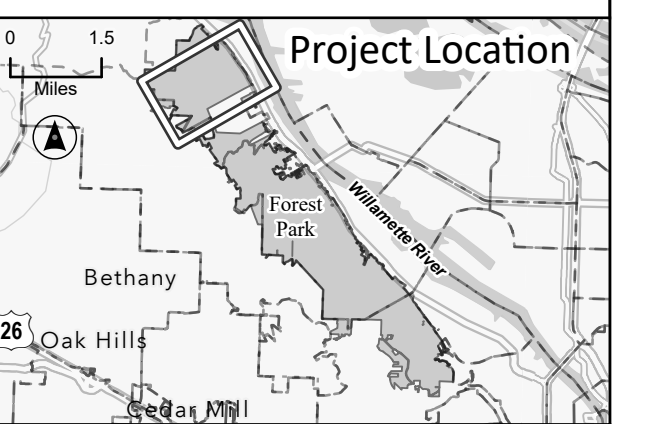




- Legend**
- Limits of Disturbance
 - Surveyed Tree Location
 - Existing Deciduous (Living)
 - Existing Deciduous (Dead)
 - Existing Conifer (Living)
 - Existing Conifer (Dead)
 - Root Protection Zone
 - Trail
 - Edge of Existing Roadway/Access Road (approximate)
 - Drainage Reserve Area
 - Drainage Flow
 - Wetland/Ordinary High Water (OHW)
 - Noxious Weed Concentration
 - Existing Maintenance Access Road Centerline
 - Culvert
 - 100-year Floodplain
 - Powerline Easement
 - Multnomah County Tax Lot
 - Zoning (City of Portland)
 - Environmental Transition Zone
 - Forest Park Boundary
 - Contour (5-foot intervals, vertical datum NAVD88)

- Zoning (City of Portland):**
- RF = Farm and Forest
 - IH = Heavy Industrial
 - OS = Open Space
 - c = Environmental Conservation
 - d = Design
 - g = River General
 - i = River Industrial
 - k = Prime Industrial
 - p = Environmental Protection
 - q = Water Quality Resource Area
 - s = Scenic Resource

- NOTES:**
1. Root protection zones for single-stem trees are calculated by DBH x 1-ft. Therefore, a 6-in DBH tree has a root protection zone of 6-ft in diameter. For multi-stemmed trees, see Mitigation Site Plan Details II, SHEET 1.325. Root protection zones are not shown for trees to be removed or dead trees.
 2. Vine Maples and all trees with a DBH less than 6-in are not shown on these plans.
 3. South of the Harborton Substation, only trees with RPZs which overlap with the Limits of Disturbance are shown on these plans; all surveyed trees are included in the Project Site area.
 4. See Construction Management Plan set for tree protection fencing.
 5. Tax lots which intersect the Limits of Disturbance are labeled with the Tax Lot ID # and acreage.



MATCHLINE SEE SHEET L019



Legend

- Limits of Disturbance
- Surveyed Tree Location
- Existing Deciduous (Living)
- Existing Deciduous (Dead)
- Existing Conifer (Living)
- Existing Conifer (Dead)
- Root Protection Zone
- Trail
- Edge of Existing Roadway/Access Road (approximate)
- Drainage Reserve Area
- Drainage Flow
- Wetland/Ordinary High Water (OHW)
- Noxious Weed Concentration
- Existing Maintenance Access Road Centerline
- Culvert
- 100-year Floodplain
- Powerline Easement
- Multnomah County Tax Lot
- Zoning (City of Portland)
- Environmental Transition Zone
- Forest Park Boundary
- Contour (5-foot intervals, vertical datum NAVD88)

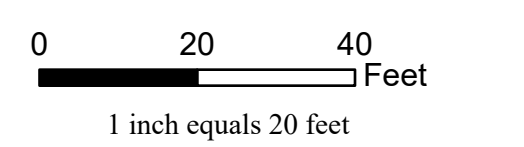
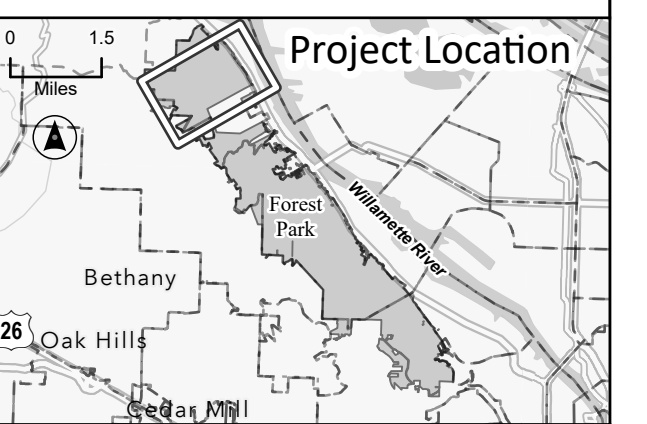
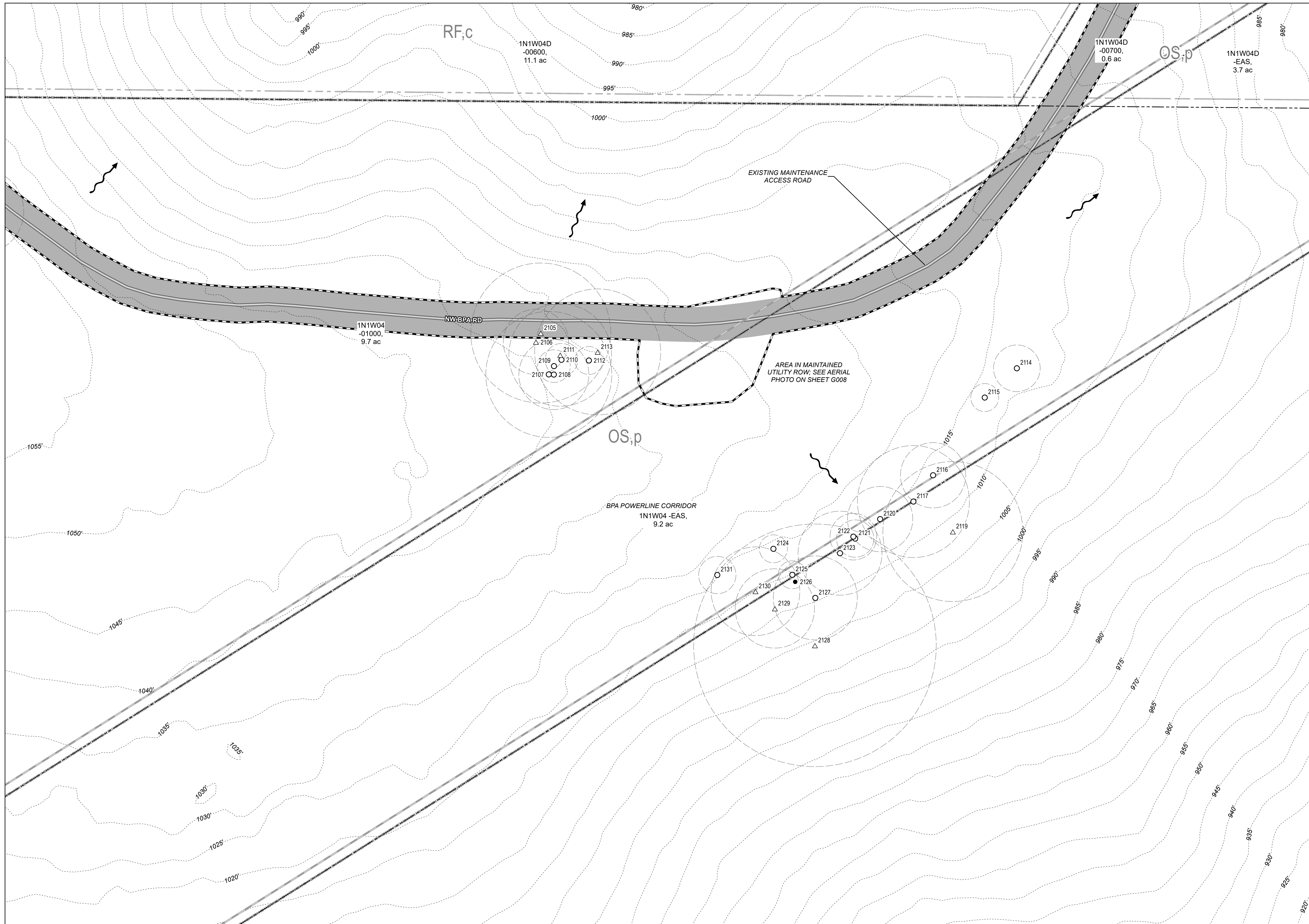
Zoning (City of Portland):

- RF = Farm and Forest
- IH = Heavy Industrial
- OS = Open Space
- c = Environmental Conservation
- d = Design
- g = River General
- i = River Industrial
- k = Prime Industrial
- p = Environmental Protection
- q = Water Quality Resource Area
- s = Scenic Resource

NOTES:

1. Root protection zones for single-stem trees are calculated by DBH x 1-ft. Therefore, a 6-in DBH tree has a root protection zone of 6-ft in diameter. For multi-stemmed trees, see Mitigation Site Plan Details II, SHT. I.325. Root protection zones are not shown for trees to be removed or dead trees.
2. Vine Maples and all trees with a DBH less than 6-in are not shown on these plans.
3. South of the Harborton Substation, only trees with RPZs which overlap with the Limits of Disturbance are shown on these plans; all surveyed trees are included in the Project Site area.
4. See Construction Management Plan set for tree protection fencing.
5. Tax lots which intersect the Limits of Disturbance are labeled with the Tax Lot ID # and acreage.

MATCHLINE SEE SHEET L020





Legend

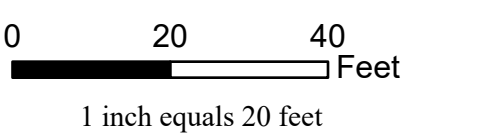
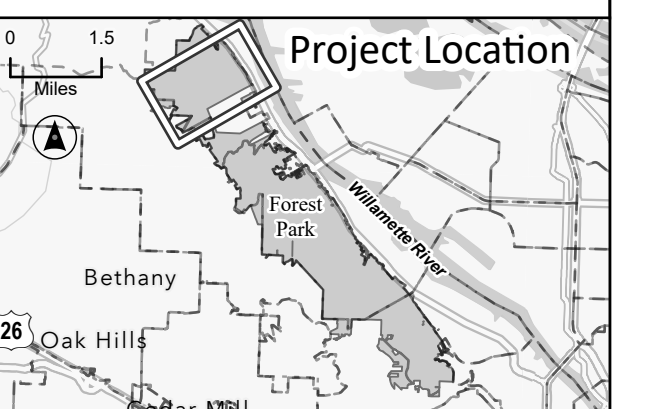
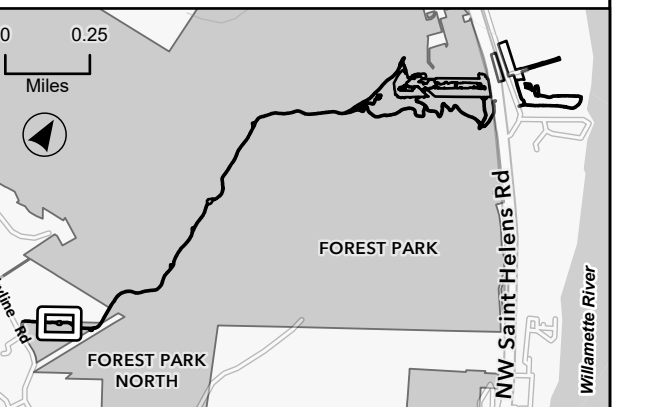
- Limits of Disturbance
- Surveyed Tree Location
- Existing Deciduous (Living)
- Existing Deciduous (Dead)
- Existing Conifer (Living)
- Existing Conifer (Dead)
- Root Protection Zone
- Trail
- Edge of Existing Roadway/Access Road (approximate)
- Drainage Reserve Area
- Drainage Flow
- Wetland/Ordinary High Water (OHW)
- Noxious Weed Concentration
- Existing Maintenance Access Road Centerline
- Culvert
- 100-year Floodplain
- Powerline Easement
- Multnomah County Tax Lot
- Zoning (City of Portland)
- Environmental Transition Zone
- Forest Park Boundary
- Contour (5-foot intervals, vertical datum NAVD88)

Zoning (City of Portland):

- RF = Farm and Forest
- IH = Heavy Industrial
- OS = Open Space
- c = Environmental Conservation
- d = Design
- g = River General
- i = River Industrial
- k = Prime Industrial
- p = Environmental Protection
- q = Water Quality Resource Area
- s = Scenic Resource

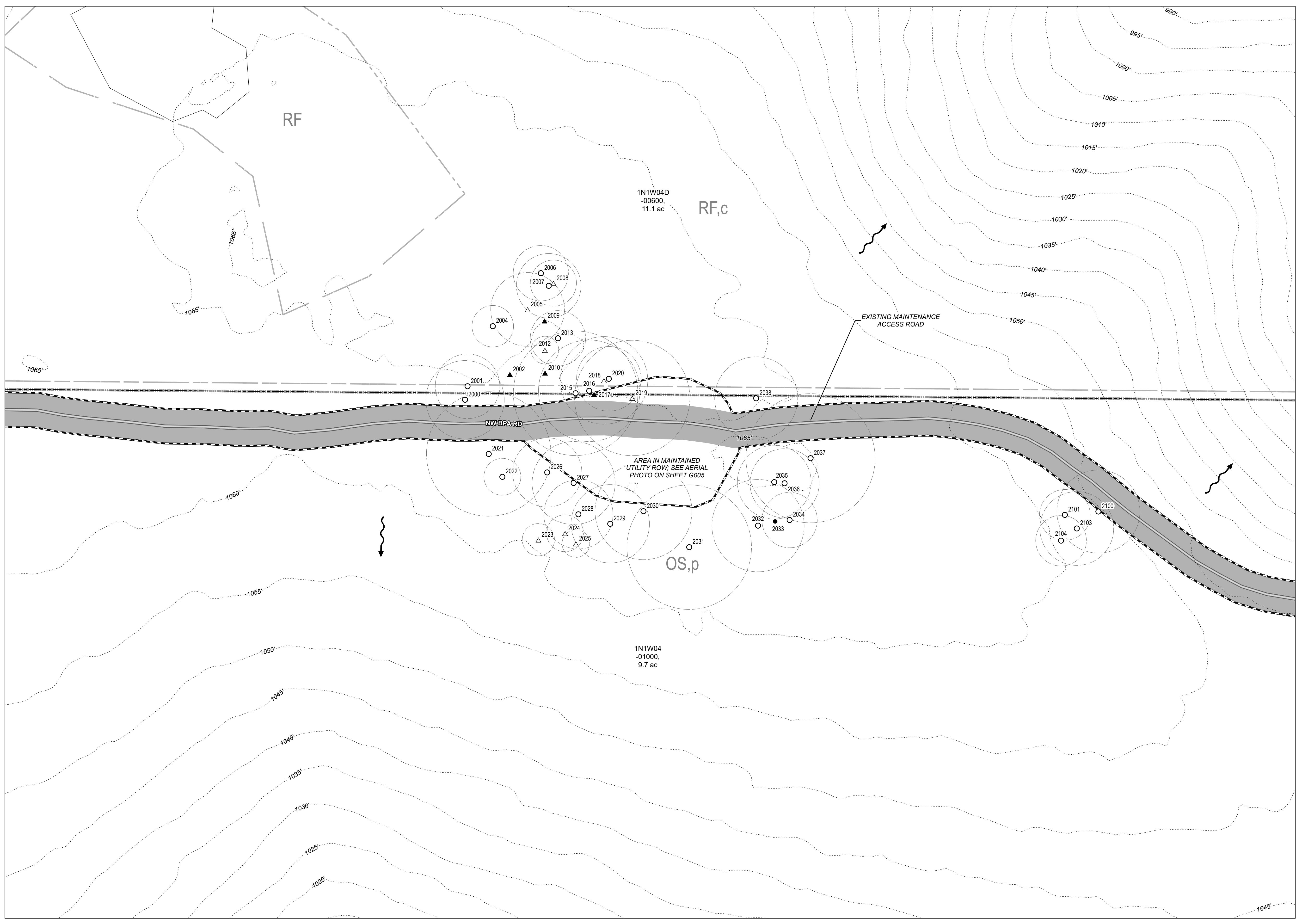
NOTES:

1. Root protection zones for single-stem trees are calculated by DBH x 1-ft. Therefore, a 6-in DBH tree has a root protection zone of 6-ft in diameter. For multi-stemmed trees, see Mitigation Site Plan Details II, SHEET L325. Root protection zones are not shown for trees to be removed or dead trees.
2. Vine Maples and all trees with a DBH less than 6-in are not shown on these plans.
3. South of the Harborton Substation, only trees with RPZs which overlap with the Limits of Disturbance are shown on these plans; all surveyed trees are included in the Project Site area.
4. See Construction Management Plan set for tree protection fencing.
5. Tax lots which intersect the Limits of Disturbance are labeled with the Tax Lot ID # and acreage.



MATCHLINE SEE SHEET L021

MATCHLINE SEE SHEET L023

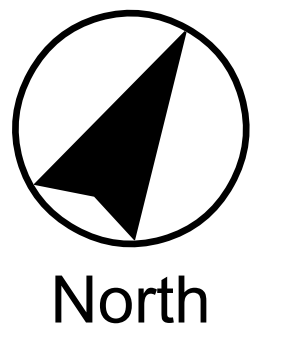
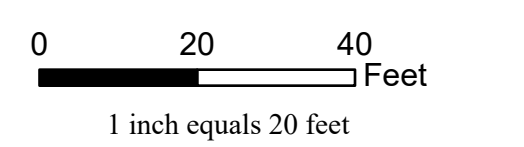
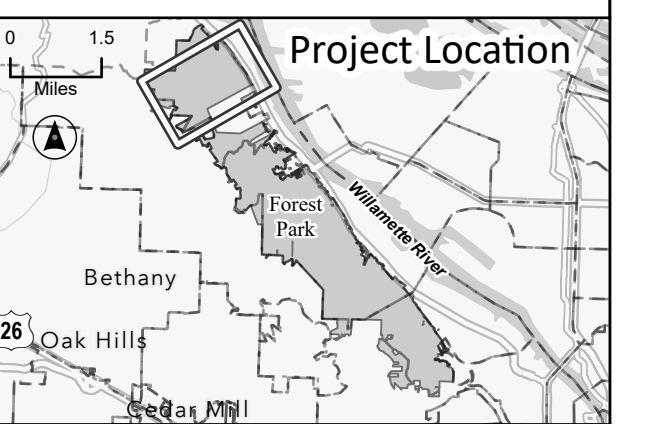




- Legend**
- Limits of Disturbance
 - Surveyed Tree Location**
 - Existing Deciduous (Living)
 - Existing Deciduous (Dead)
 - Existing Conifer (Living)
 - Existing Conifer (Dead)
 - Root Protection Zone
 - Trail
 - Edge of Existing Roadway/Access Road (approximate)
 - Drainage Reserve Area
 - Drainage Flow
 - Wetland/Ordinary High Water (OHW)
 - Noxious Weed Concentration
 - Existing Maintenance Access Road Centerline
 - Culvert
 - 100-year Floodplain
 - Powerline Easement
 - Multnomah County Tax Lot
 - Zoning (City of Portland)
 - Environmental Transition Zone
 - Forest Park Boundary
 - Contour (5-foot intervals, vertical datum NAVD88)

- Zoning (City of Portland):**
- RF = Farm and Forest
 - IH = Heavy Industrial
 - OS = Open Space
 - c = Environmental Conservation
 - d = Design
 - g = River General
 - i = River Industrial
 - k = Prime Industrial
 - p = Environmental Protection
 - q = Water Quality Resource Area
 - s = Scenic Resource

- NOTES:**
1. Root protection zones for single-stem trees are calculated by DBH x 1-ft. Therefore, a 6-in DBH tree has a root protection zone of 6-ft in diameter. For multi-stemmed trees, see Mitigation Site Plan Details II, SHEET 1.325. Root protection zones are not shown for trees to be removed or dead trees.
 2. Vine Maples and all trees with a DBH less than 6-in are not shown on these plans.
 3. South of the Harborton Substation, only trees with RPZs which overlap with the Limits of Disturbance are shown on these plans; all surveyed trees are included in the Project Site area.
 4. See Construction Management Plan set for tree protection fencing.
 5. Tax lots which intersect the Limits of Disturbance are labeled with the Tax Lot ID # and acreage.



MATCHLINE SEE SHEET L020